

Live Strategy Session

With Steve Strazza

BREAKOUT MULTIPLIER

November 20, 2025

Disclaimer:

The information, opinions, and other materials contained in this presentation is the property of Stock Market Media, LLC and may not be reproduced in any way, in whole or in part, without express authorization of the copyright holder in writing. The statements and statistics contained herein have been prepared by Stock Market Media, LLC based on information from sources considered to be reliable. We make no representation or warranty, express, or implied, as to its accuracy or completeness. This publication is for the information of investors and business persons and does not constitute an offer to sell or a solicitation to buy securities.

This document may include estimates, projections and other “forward-looking” statements, due to numerous factors, actual events may differ substantially from those presented. Opinions and estimates offered herein constitute Stock Market Media, LLC’s judgment and are subject to change without notice, as are statements of financial market trends which are based on current market conditions

Any investment is subject to loss of capital and is only appropriate for persons who can bear that risk and the nature of an investment. Any comments or statements made herein do not necessarily reflect those of Stock Market Media, LLC or its affiliates (collectively, "Stock Market Media") and do not constitute investment advice. These materials are not intended to constitute legal, tax, or accounting advice or investment recommendations. Prospective investors should consult their own advisors regarding such matters.

See full terms and conditions: <https://www.stockmarkettv.com/terms>

Portfolio Thematic Exposure

Transports

0.9%

Bearish Bitcoin

8.4%

Bearish Home Construction

6.2%

Asia

2.2%

Defensives

1.9%

Bonds

0.8%

Speculative Healthcare

3.1%

Semis

16.7%

Idiosyncratic

11.9%

China

7.2%

Financials/Banks

4.2%

Crypto

0.4%

Healthcare

15.0%

Industrial Metals

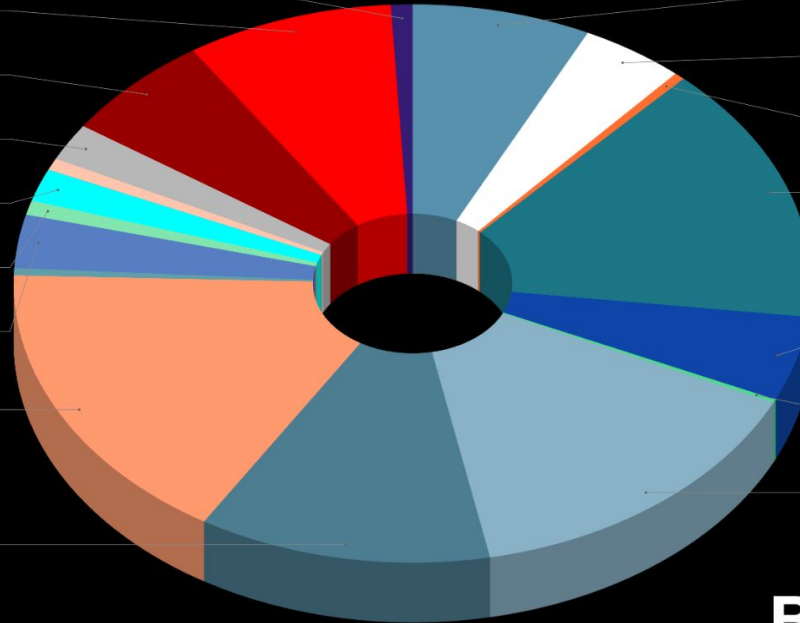
4.9%

EVTOL / Drone

0.2%

Energy

14.9%



BREAKOUT
MULTIPLIER

Portfolio Sector Exposure

Others

2.8%

Energy

12.4%

Healthcare

18.1%

Basic Materials

4.9%

Communication Services

3.5%

Consumer Defensive

2.3%

Consumer Cyclical

4.1%

Financial

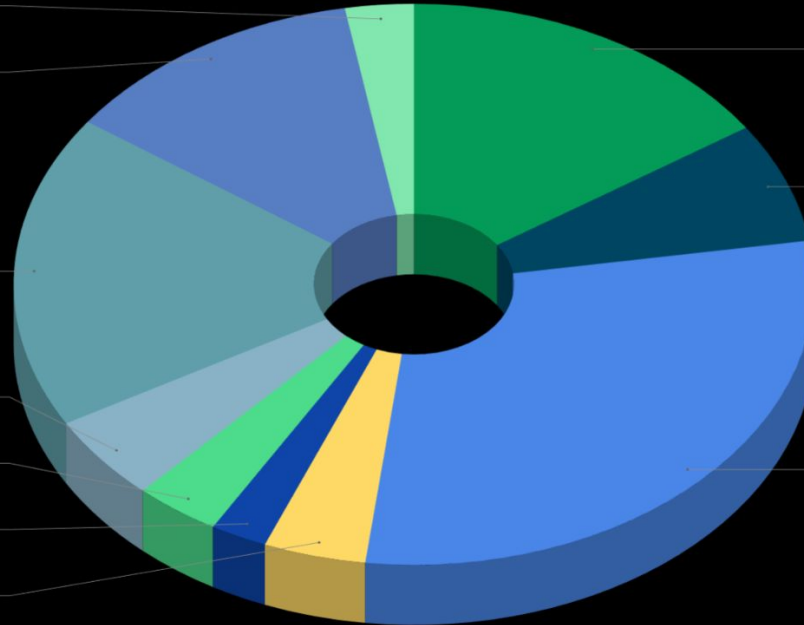
15.6%

Industrials

6.9%

Technology

29.4%



BREAKOUT MULTIPLIER CURRENT RISK-FREE EXPOSURE

Stock		Contract Info			Contract Price			Performance		Multiplier Speed		Distance from ATM	Trade Status
Ticker	C/S Price	Entry Date	Option Strike	Contract	Entry	Current	Max	Current %	Max %	Days to Double	Date Doubled		
C	102.48	08/27/2025	105.00	Nov 21st Call	2.10	0.15	5.48	-93%	161%	26	9/22/2025	-2.46%	1/2 Open
BTDR	11.15	08/29/2025	20.00	Dec 19th Call	1.45	0.15	9.60	-90%	562%	24	9/22/2025	-79.37%	1/2 Open
VALE	12.25	09/11/2025	12.00	Dec 19th Call	0.16	0.45	0.75	181%	369%	41	10/22/2025	2.04%	1/2 Open
MRK	94.77	09/11/2025	90.00	Nov 21st Call	2.54	5.15	7.63	103%	200%	64	11/14/2025	5.03%	1/2 Open
XPEV	21.13	09/19/2025	25.00	Nov 21st Call	1.22	0.05	3.70	-96%	203%	53	11/11/2025	-18.32%	1/2 Open
XPEV	21.13	09/19/2025	28.00	Dec 19th Call	1.08	0.30	2.76	-72%	156%	53	11/11/2025	-32.51%	1/2 Open
RCAT	7.03	09/22/2025	15.00	Nov 21st Call	0.86	0.05	3.75	-94%	336%	1	9/23/2025	-113.37%	1/2 Open
CSCO	79.61	09/25/2025	72.50	Nov 21st Call	1.16	6.70	7.10	478%	512%	13	10/8/2025	8.93%	1/2 Open
SMCI	34.75	09/29/2025	60.00	Nov 21st Call	1.70	0.03	6.45	-98%	279%	2	10/01/25	-72.66%	1/2 Open
GILD	127.5	09/30/2025	120.00	Nov 21st Call	2.80	8.40	8.41	200%	200%	10	10/10/2025	5.88%	1/2 Open
AMD	231.83	10/01/2025	190.00	Nov 21st Call	4.43	42.60	77.70	862%	1654%	5	10/6/2025	18.04%	1/2 Open
ADM	58.91	10/03/2025	65.00	Dec 19th Call	1.46	0.35	3.50	-76%	140%	4	10/7/2025	-10.34%	1/2 Open
MARA	11.51	10/03/2025	28.00	Nov 21st Call	0.83	0.02	2.02	-98%	143%	7	10/10/2025	-143.27%	1/2 Open
BTDR	11.15	10/03/2025	25.00	Nov 21st Call	1.75	0.03	6.45	-98%	269%	12	10/15/2025	-124.22%	1/2 Open
TLT	89.07	10/08/2025	92.00	Nov 21st Call	0.64	0.05	1.36	-92%	113%	12	10/20/2025	-3.29%	1/2 Open
PEP	146.48	10/09/2025	145.00	Nov 21st Call	2.48	2.67	11.30	8%	356%	1	10/10/2025	1.01%	1/2 Open
HIMS	36.7	10/15/2025	75.00	Nov 21st Call	3.05	0.05	7.00	-98%	130%	0	10/15/2025	-104.36%	1/2 Open
MSFT	491.12	10/21/2025	545.00	Nov 21st Call	6.80	0.17	22.78	-98%	235%	7	10/28/2025	-10.97%	1/2 Open
IBIT	51.53	10/30/2025	57.00	Nov 21st Put	1.30	6.30	6.75	385%	419%	5	11/4/2025	-10.62%	1/2 Open
BLDR	96.2	10/30/2025	105.00	Nov 21st Put	2.80	9.47	9.47	238%	238%	18	11/17/2025	-9.15%	1/2 Open

BREAKOUT MULTIPLIER OPEN POSITION WATCHLIST

Stock		Contract Info			Contract Price			Performance		Multiplier Speed		Distance from ATM	Trade Status
Ticker	C/S Price	Entry Date	Option Strike	Contract	Entry	Current	Max	Current %	Max %	Days to Double	Date Doubled		
UMAC	8.97	07/15/2025	20.00	Nov 21st Call	1.40	0.03	2.60	-98%	86%	-	-	-122.97%	Open
KC	12.58	08/22/2025	20.00	Nov 21st Call	1.10	0.02	1.80	-98%	64%	-	-	-58.98%	Open
ETHA	22.63	09/08/2025	40.00	Nov 21st Call	2.09	0.04	2.19	-98%	5%	-	-	-76.76%	Open
GILD	127.5	09/11/2025	125.00	Nov 21st Call	2.75	3.50	5.25	27%	91%	-	-	1.96%	Open
JD	29.39	09/14/2025	42.50	Dec 19th Call	1.75	0.07	2.00	-96%	14%	-	-	-44.61%	Open
FCX	41.53	09/23/2025	50.00	Nov 21st Call	1.25	0.01	1.25	-99%	0%	-	-	-20.39%	Open
COP	89.3	09/23/2025	100.00	Nov 21st Call	2.30	0.05	4.53	-98%	97%	-	-	-11.98%	Open
MRNA	24.37	10/08/2025	35.00	Nov 21st Call	1.37	0.03	1.37	-98%	0%	-	-	-43.62%	Open
XOM	117.84	10/08/2025	120.00	Nov 21st Call	1.53	0.20	1.80	-87%	18%	-	-	-1.83%	Open
TLT	89.07	10/13/2025	93.00	Dec 19th Call	1.04	0.21	1.45	-80%	39%	-	-	-4.41%	Open
BTBT	2.23	10/14/2025	5.50	Nov 21st Call	0.30	0.01	0.40	-97%	33%	-	-	-146.64%	Open
QUBT	11.97	10/15/2025	30.00	Nov 21st Call	1.62	0.01	2.40	-99%	48%	-	-	-150.63%	Open
TDOT	7.26	10/16/2025	12.00	Nov 21st Call	0.37	0.05	0.55	-86%	49%	-	-	-65.29%	Open
DAR	33.85	10/23/2025	40.00	Dec 19th Call	0.90	0.48	0.90	-47%	0%	-	-	-18.17%	Open
XOM	117.84	10/23/2025	125.00	Jan 16th Call	1.77	1.60	2.41	-10%	36%	-	-	-6.08%	Open
C	102.48	10/27/2025	105.00	Nov 21st Call	1.12	0.10	1.74	-91%	55%	-	-	-2.46%	Open
CPNG	27.84	10/27/2025	35.00	Dec 19th Call	0.64	0.02	0.95	-97%	48%	-	-	-25.72%	Open
CPNG	27.84	10/27/2025	36.00	Jan 16th Call	0.66	0.06	1.01	-91%	53%	-	-	-29.31%	Open
EH	14.66	10/29/2025	20.00	Jan 16th Call	1.13	0.03	1.75	-97%	55%	-	-	-36.43%	Open
CRM	229.97	10/30/2025	290.00	Dec 19th Call	5.40	1.00	7.12	-81%	32%	-	-	-26.10%	Open
SLB	36.54	11/06/2025	40.00	Dec 19th Call	0.70	0.32	0.80	-54%	14%	-	-	-9.47%	Open
RKT	17.59	11/06/2025	15.00	Nov 21st Put	0.33	0.03	0.48	-91%	45%	-	-	14.72%	Open
SCHW	93.53	11/07/2025	110.00	Jan 16th Call	2.43	1.53	3.55	-37%	46%	-	-	-17.61%	Open
UAL	93.62	11/10/2025	110.00	Dec 19th Call	2.90	0.73	3.15	-75%	9%	-	-	-17.50%	Open
GRAB	5.33	11/10/2025	7.50	Jan 16th Call	0.18	0.09	0.20	-50%	11%	-	-	-40.71%	Open
XOM	117.84	11/10/2025	120.00	Dec 19th Call	2.12	2.00	3.35	-6%	58%	-	-	-1.83%	Open
USO	71.24	11/11/2025	80.00	Jan 16th Call	1.40	1.00	1.68	-29%	13%	-	-	-12.30%	Open
PFE	24.84	11/12/2025	27.50	Jan 16th Call	0.51	0.37	0.86	-27%	69%	-	-	-10.71%	Open
C	102.48	11/12/2025	110.00	Dec 19th Call	1.63	0.75	1.74	-54%	7%	-	-	-7.34%	Open
BTU	27.77	11/12/2025	35.00	Jan 16th Call	1.68	0.87	1.95	-48%	16%	-	-	-26.04%	Open
WMB	59.86	11/14/2025	65.00	Jan 16th Call	0.95	0.57	1.20	-40%	26%	-	-	-8.60%	Open
CNC	36.68	11/17/2025	42.50	Dec 19th Call	0.79	0.43	0.85	-46%	8%	-	-	-19.11%	Open
BIDU	115.91	11/18/2025	135.00	Jan 16th Call	3.10	3.10	3.10	0%	0%	-	-	-16.47%	Open
BABA	160.62	11/18/2025	185.00	Jan 16th Call	4.60	4.00	4.60	-13%	0%	-	-	-15.18%	Open

Breakout Multiplier Monthly Statistics

	Month	No. of trades	Number of 2x	Avg. days to 2x	Avg. max return for doubles	Number of +3x	Number of +5x	Number of +10x	Zeros
2024	July	3	3	13	324%	2	1	0	0
	August	13	6	16	258%	4	0	0	4
	September	9	7	22	382%	4	2	1	2
	October	10	7	24	1133%	5	3	1	3
	November	14	7	17	445%	5	4	1	7
	December	14	4	18	210%	1	0	0	10
2025	January	12	6	15	518%	5	2	1	5
	February	19	12	13	354%	5	4	2	6
	March	25	14	8	470%	11	6	2	11
	April	17	13	20	419%	9	6	2	2
	May	25	19	9	691%	15	10	5	5
	June	21	17	12	513%	14	9	3	4
	July	26	17	20	527%	12	7	3	8
	August	18	10	22	937%	8	6	4	7
	September	25	19	17	814%	14	6	3	1
	October	25	11	7	381%	7	3	1	-
	November	13	0	-	-	0	0	0	-
	Average	16	10	16	513%	7.14	4.29	1.79	5.00

11/20/2025

BREAKOUT
MULTIPLIER

Breakout Multiplier Lifetime Statistics

Number of trades	Number of 2x	Avg. days to double	Avg. max return for doubles	Number of +3x	Number of +5x	Number of +10x	Number of Zeros
287	170	15	560%	119	68	29	79
59.23%				41.46%	23.69%	10.10%	27.53%

11/20/2025

Breakout Multiplier Lifetime Statistics (Closed Trades)

Number of trades	Number of 2x	Avg. days to double	Avg. max return for doubles	Number of +3x	Number of +5x	Number of +10x	Number of Zeros
233	150	15	591%	119	64	28	83
64.38%				51.07%	27.47%	12.02%	35.62%

11/20/2025

Open Positions (Post November OPEX)

BREAKOUT
MULTIPLIER

Stock		Contract Info			Contract Price			Performance			Multiplier Speed		Distance from ATM	Trade Status
Ticker	C/S Price	Entry Date	Option Strike	Contract	Entry	Current	Max	Current %	Max %	Doubled	Days to Double	Date Doubled		
BTDR	11.17	08/29/2025	20.00	Dec 19th Call	1.45	0.15	9.60	-90%	562%	YES	24	9/22/2025	-79.05%	1/2 Open
VALE	12.24	09/11/2025	12.00	Dec 19th Call	0.16	0.45	0.75	181%	369%	YES	41	10/22/2025	1.96%	1/2 Open
JD	29.36	09/14/2025	42.50	Dec 19th Call	1.75	0.07	2.00	-96%	14%	NO	-	-	-44.75%	Open
XPEV	21.19	09/19/2025	28.00	Dec 19th Call	1.08	0.30	2.76	-72%	156%	YES	53	11/11/2025	-32.14%	1/2 Open
ADM	58.55	10/03/2025	65.00	Dec 19th Call	1.46	0.35	3.50	-76%	140%	YES	4	10/7/2025	-11.02%	1/2 Open
TLT	89.06	10/13/2025	93.00	Dec 19th Call	1.04	0.21	1.45	-80%	39%	NO	-	-	-4.42%	Open
DAR	33.71	10/23/2025	40.00	Dec 19th Call	0.90	0.48	0.90	-47%	0%	NO	-	-	-18.66%	Open
XOM	117.92	10/23/2025	125.00	Jan 16th Call	1.77	1.60	2.41	-10%	36%	NO	-	-	-6.00%	Open
CPNG	27.89	10/27/2025	35.00	Dec 19th Call	0.64	0.02	0.95	-97%	48%	NO	-	-	-25.49%	Open
CPNG	27.89	10/27/2025	36.00	Jan 16th Call	0.66	0.06	1.01	-91%	53%	NO	-	-	-29.08%	Open
EH	14.65	10/29/2025	20.00	Jan 16th Call	1.13	0.03	1.75	-97%	55%	NO	-	-	-36.52%	Open
CRM	230.12	10/30/2025	290.00	Dec 19th Call	5.40	1.00	7.12	-81%	32%	NO	-	-	-26.02%	Open
SLB	36.57	11/06/2025	40.00	Dec 19th Call	0.70	0.32	0.80	-54%	14%	NO	-	-	-9.38%	Open
SCHW	93.4	11/07/2025	110.00	Jan 16th Call	2.43	1.53	3.55	-37%	46%	NO	-	-	-17.77%	Open
UAL	93.15	11/10/2025	110.00	Dec 19th Call	2.90	0.73	3.15	-75%	9%	NO	-	-	-18.09%	Open
GRAB	5.35	11/10/2025	7.50	Jan 16th Call	0.18	0.09	0.20	-50%	11%	NO	-	-	-40.19%	Open
XOM	117.92	11/10/2025	120.00	Dec 19th Call	2.12	2.00	3.35	-6%	58%	NO	-	-	-1.76%	Open
USO	71.28	11/11/2025	80.00	Jan 16th Call	1.40	1.00	1.58	-29%	13%	NO	-	-	-12.23%	Open
PFE	24.76	11/12/2025	27.50	Jan 16th Call	0.51	0.37	0.86	-27%	69%	NO	-	-	-11.07%	Open
C	102.05	11/12/2025	110.00	Dec 19th Call	1.63	0.75	1.74	-54%	7%	NO	-	-	-7.79%	Open
BTU	27.77	11/12/2025	35.00	Jan 16th Call	1.68	0.87	1.95	-48%	16%	NO	-	-	-26.04%	Open
WMB	60.09	11/14/2025	65.00	Jan 16th Call	0.95	0.57	1.20	-40%	26%	NO	-	-	-8.17%	Open
CNC	35.58	11/17/2025	42.50	Dec 19th Call	0.79	0.43	0.85	-46%	8%	NO	-	-	-19.45%	Open
BIDU	115.83	11/18/2025	135.00	Jan 16th Call	3.10	3.10	3.10	0%	0%	NO	-	-	-16.55%	Open
BABA	160.49	11/18/2025	185.00	Jan 16th Call	4.60	4.00	4.60	-13%	0%	NO	-	-	-15.27%	Open

Portfolio Thematic Exposure (Post November OPEX)

Healthcare

4.6%

Speculative Healthcare

6.1%

Transports

2.1%

Financials/Banks

9.1%

Big Tech

1.6%

EVTOL / Drone

0.2%

Asia

5.2%

Energy

34.6%

Crypto

0.4%

Industrial Metals

11.8%

China

17.2%

Agriculture

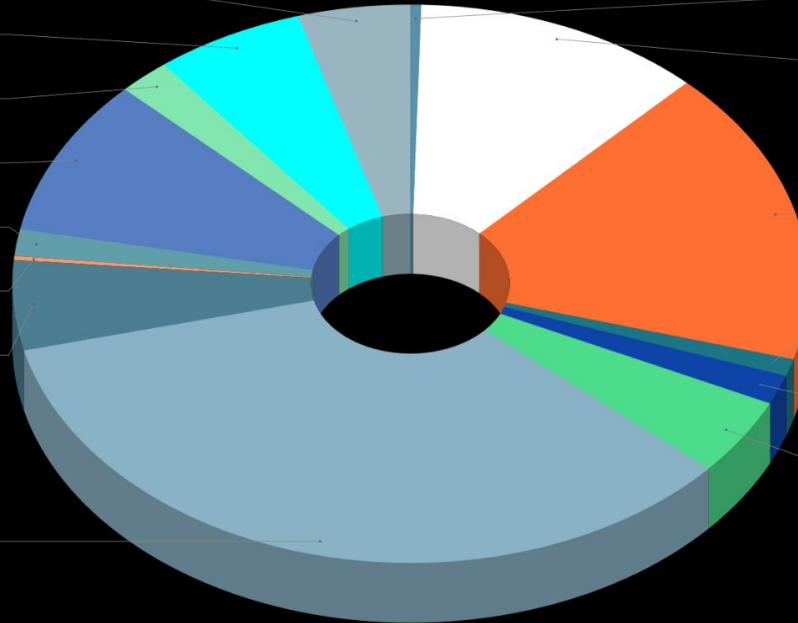
1.0%

Bonds

1.7%

Idiosyncratic

4.5%



Open Positions Expiring November 2025 Opex

Stock		Contract Info			Contract Price			Performance			Multiplier Speed		Distance from ATM	Trade Status
Ticker	C/S Price	Entry Date	Option Strike	Contract	Entry	Current	Max	Current %	Max %	Doubled	Days to Double	Date Doubled		
KC	12.6	08/22/2025	20.00	Nov 21st Call	1.10	0.02	1.80	-98%	64%	NO	-	-	-58.73%	Open
C	102.34	08/27/2025	105.00	Nov 21st Call	2.10	0.15	5.48	-93%	161%	YES	26	9/22/2025	-2.60%	1/2 Open
ETHA	22.63	09/08/2025	40.00	Nov 21st Call	2.09	0.04	2.19	-98%	5%	NO	-	-	-76.76%	Open
GILD	127.92	09/11/2025	125.00	Nov 21st Call	2.75	3.50	5.25	27%	91%	NO	-	-	2.28%	Open
MRK	94.77	09/11/2025	90.00	Nov 21st Call	2.54	5.15	7.63	103%	200%	YES	64	11/14/2025	5.03%	1/2 Open
XPEV	21.13	09/19/2025	25.00	Nov 21st Call	1.22	0.05	3.70	-96%	203%	YES	53	11/11/2025	-18.32%	1/2 Open
RCAT	7.05	09/22/2025	15.00	Nov 21st Call	0.86	0.05	3.75	-94%	336%	YES	1	9/23/2025	-112.77%	1/2 Open
FCX	41.54	09/23/2025	50.00	Nov 21st Call	1.25	0.01	1.25	-99%	0%	NO	-	-	-20.37%	Open
COP	89.3	09/23/2025	100.00	Nov 21st Call	2.30	0.05	4.53	-98%	97%	NO	-	-	-11.98%	Open
CSCO	79.57	09/25/2025	72.50	Nov 21st Call	1.16	7.35	7.35	534%	534%	YES	13	10/8/2025	8.89%	1/2 Open
SMCI	34.75	09/29/2025	60.00	Nov 21st Call	1.70	0.03	6.45	-98%	279%	YES	2	10/01/25	-72.66%	1/2 Open
GILD	127.92	09/30/2025	120.00	Nov 21st Call	2.80	8.40	8.41	200%	200%	YES	10	10/10/2025	6.19%	1/2 Open
AMD	230.39	10/01/2025	190.00	Nov 21st Call	4.43	42.60	77.70	862%	1654%	YES	5	10/6/2025	17.53%	1/2 Open
BTDR	11.15	10/03/2025	25.00	Nov 21st Call	1.75	0.03	6.45	-98%	269%	YES	12	10/15/2025	-124.22%	1/2 Open
MARA	11.45	10/03/2025	28.00	Nov 21st Call	0.83	0.02	2.02	-98%	143%	YES	7	10/10/2025	-144.54%	1/2 Open
MRNA	24.37	10/08/2025	35.00	Nov 21st Call	1.37	0.03	1.37	-98%	0%	NO	-	-	-43.62%	Open
XOM	117.84	10/08/2025	120.00	Nov 21st Call	1.53	0.20	1.80	-87%	18%	NO	-	-	-1.83%	Open
TLT	89.07	10/08/2025	92.00	Nov 21st Call	0.64	0.05	1.36	-92%	113%	YES	12	10/20/2025	-3.29%	1/2 Open
PEP	146.48	10/09/2025	145.00	Nov 21st Call	2.48	2.67	11.30	8%	356%	YES	1	10/10/2025	1.01%	1/2 Open
BTBT	2.25	10/14/2025	5.50	Nov 21st Call	0.30	0.01	0.40	-97%	33%	NO	-	-	-144.44%	Open
QUBT	12.07	10/15/2025	30.00	Nov 21st Call	1.62	0.01	2.40	-99%	48%	NO	-	-	-148.55%	Open
HIMS	36.74	10/15/2025	75.00	Nov 21st Call	3.05	0.05	7.00	-98%	130%	YES	0	10/15/2025	-104.14%	1/2 Open
TDOD	7.32	10/16/2025	12.00	Nov 21st Call	0.37	0.05	0.55	-86%	49%	NO	-	-	-63.93%	Open
MSFT	492.56	10/21/2025	545.00	Nov 21st Call	6.80	0.17	22.78	-98%	235%	YES	7	10/28/2025	-10.65%	1/2 Open
C	102.34	10/27/2025	105.00	Nov 21st Call	1.12	0.10	1.74	-91%	55%	NO	-	-	-2.60%	Open
BLDR	96.2	10/30/2025	105.00	Nov 21st Put	2.80	9.47	9.47	238%	238%	YES	18	11/17/2025	-9.15%	1/2 Open
IBIT	51.57	10/30/2025	57.00	Nov 21st Put	1.30	6.30	6.75	385%	419%	YES	5	11/4/2025	-10.53%	1/2 Open
RKT	17.65	11/06/2025	15.00	Nov 21st Put	0.33	0.03	0.48	-91%	45%	NO	-	-	15.01%	Open

Thematic Exposure (November OPEX)

Bearish Bitcoin
14.1%

Bearish Home Construction
10.4%

Big Tech
0.1%

Defensives
3.1%

Bonds
0.2%

Speculative Healthcare
1.0%

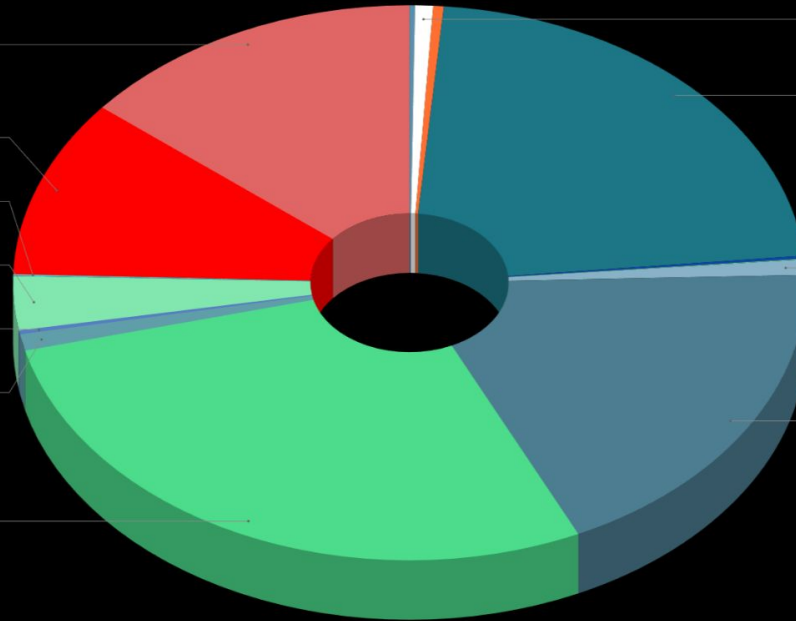
Semis
28.1%

Financials/Banks
0.7%

Healthcare
22.1%

Energy
0.9%

Idiosyncratic
18.5%



BREAKOUT
MULTIPLIER

\$CSCO 11/21 \$72.50 calls for approximately \$1.16 per contract (1/2 Open)

Cisco Systems, Inc. - CSCO:US - Daily - USD



20th Nov 2025

\$AMD 11/21 \$190 calls for approximately \$4.43 per contract (1½ Open)

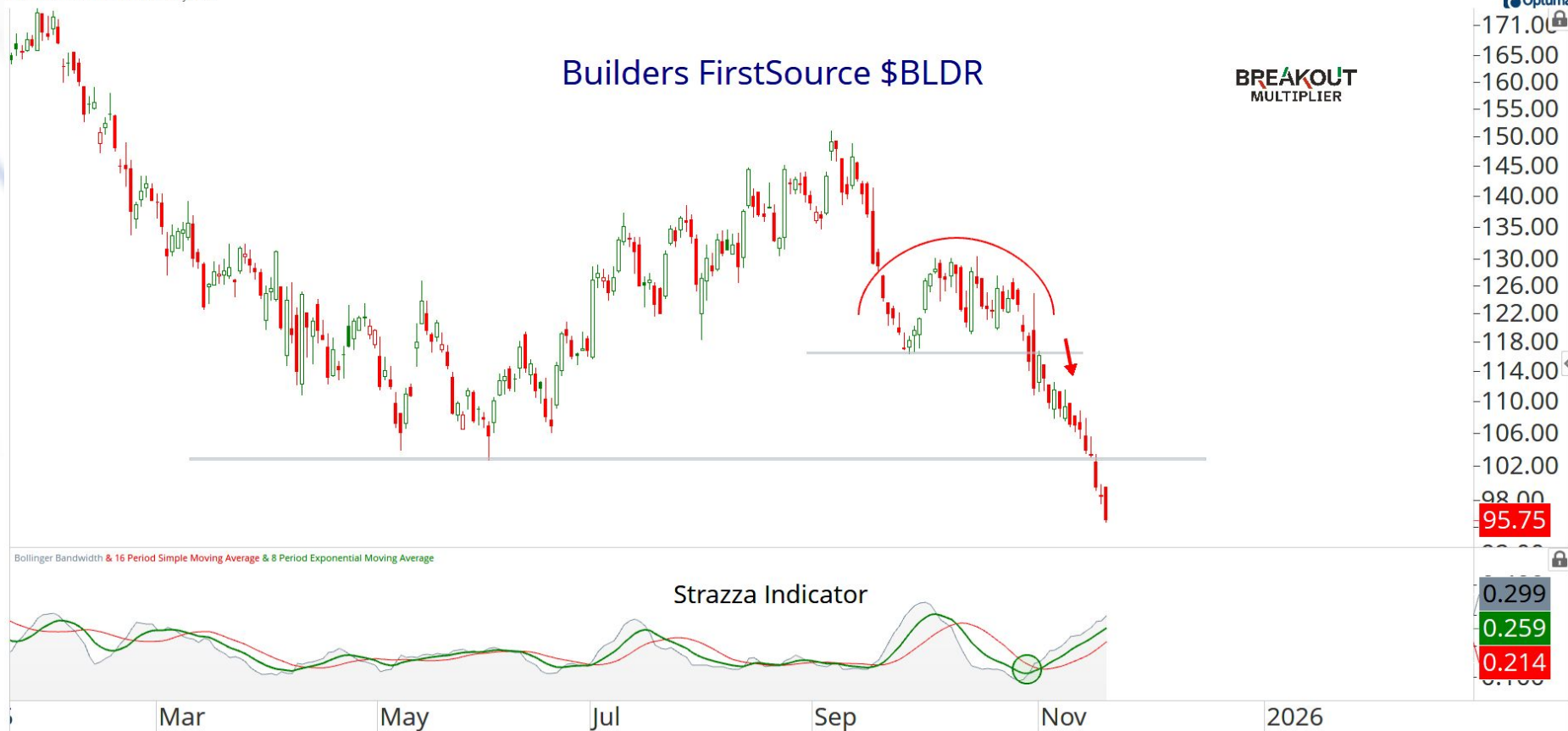


\$BLDR 11/21 \$105 puts for approximately \$2.80 per contract (1½ Open)

Builders Firstsource Inc - BLDR:US - Daily - USD

Builders FirstSource \$BLDR

BREAKOUT
MULTIPLIER



Bollinger Bandwidth & 16 Period Simple Moving Average & 8 Period Exponential Moving Average

Strazza Indicator



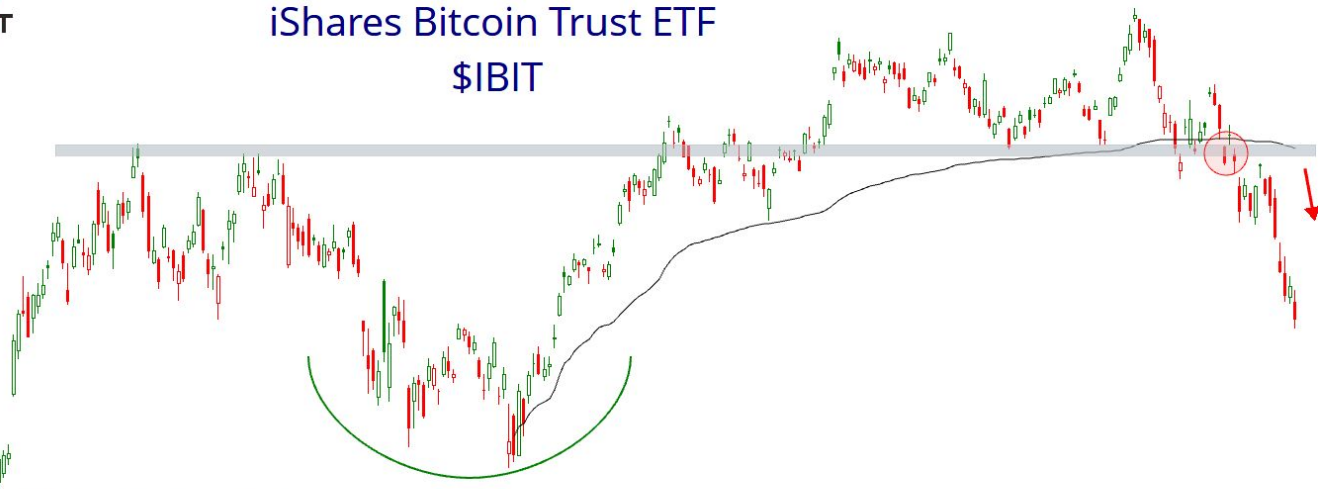
20th Nov 2025

\$IBIT 11/21 \$57 puts for approximately \$1.30 per contract (1½ Open)

iShares Bitcoin Trust - IBIT:US - Daily - USD

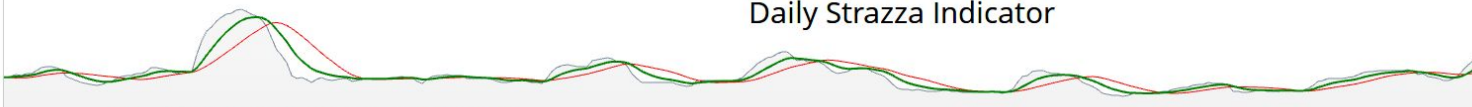
BREAKOUT
MULTIPLIER

iShares Bitcoin Trust ETF
\$IBIT



Bollinger Bandwidth & 16 Period Simple Moving Average & 8 Period Exponential Moving Average

Daily Strazza Indicator



Bollinger Bandwidth & 80 Period Simple Moving Average & 40 Period Exponential Moving Average

Weekly Strazza Indicator



Nov

2025

Mar

May

Jul

Sep

Nov

2026

20th Nov 2025

Optima



\$MRK 11/21 \$90 calls for approximately \$2.40 per contract (1/2 Open)

Merck & Co Inc - MRK:US - Daily - USD

Merck & Co \$MRK

BREAKOUT
MULTIPLIER

Optima

115.00
112.00
109.00
106.00
103.00
100.00
97.00
95.05
92.00
89.00
88.00
85.00
82.00
79.00
76.00
74.00
72.00
70.00
0.300
0.176
0.132
0.096
0.000

Bollinger Bandwidth & 16 Period Simple Moving Average & 8 Period Exponential Moving Average

Strazza Indicator

Sep

Nov

2025

Mar

May

Jul

Sep

Nov

2026

Mar

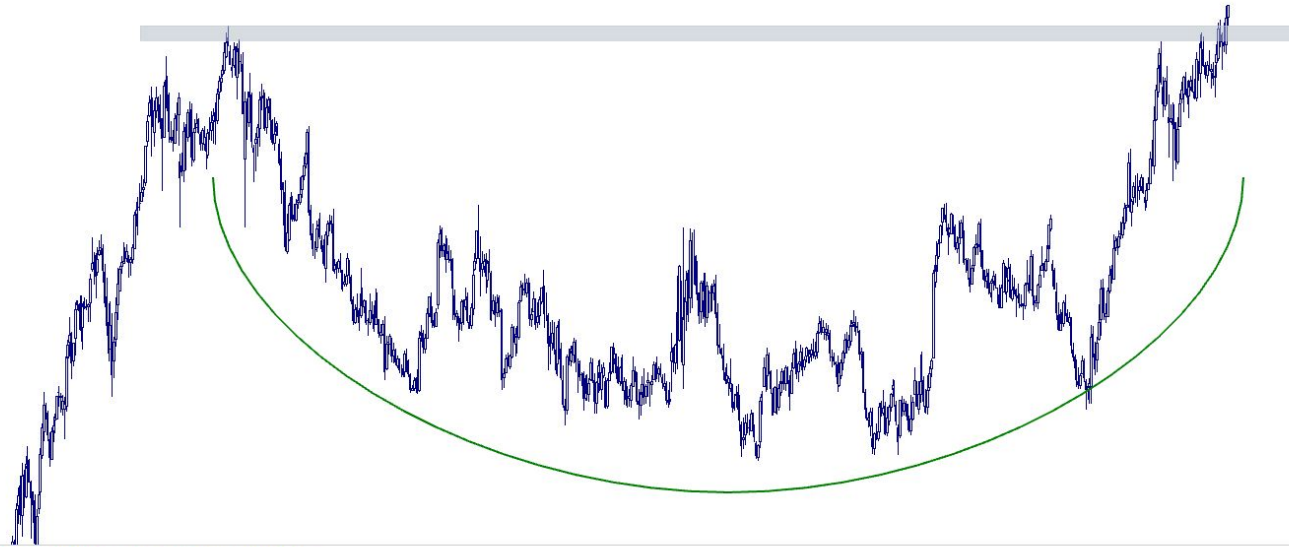
20th Nov 2025

\$GILD 11/21 \$125 calls for approximately \$2.74 per contract

Gilead Sciences, Inc. - GILD:US - Weekly - USD

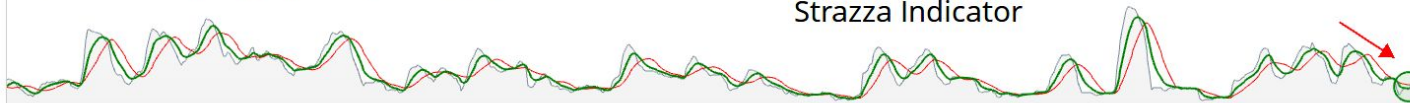
BREAKOUT
MULTIPLIER

Gilead Sciences \$GILD



Bollinger Bandwidth & 16 Period Simple Moving Average & 8 Period Exponential Moving Average

Strazza Indicator



2012

2014

2016

2018

2020

2022

2024

2026

2028

20th Nov 2025

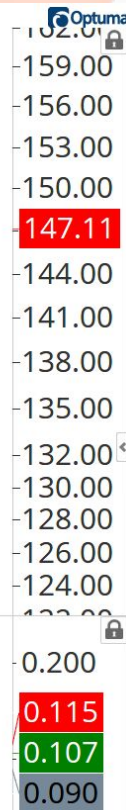
\$GILD 11/21 \$120 calls for approximately \$2.80 per contract (1/2 Open)

\$PEP 11/21 \$145 calls for approximately \$2.48 per contract (1/2 Open)

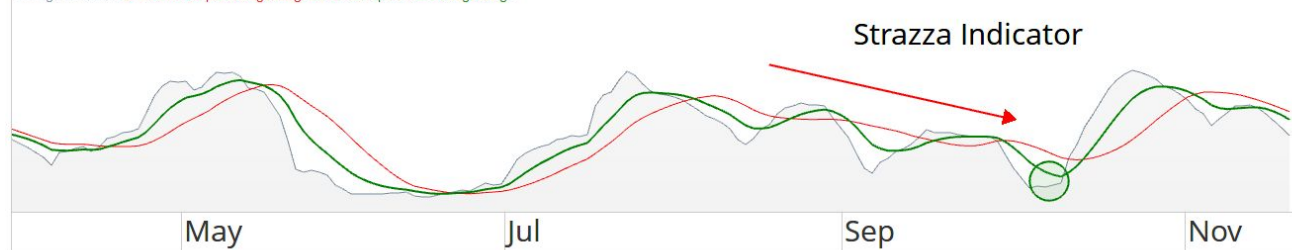
PepsiCo Inc - PEP:US - Daily - USD



BREAKOUT
MULTIPLIER



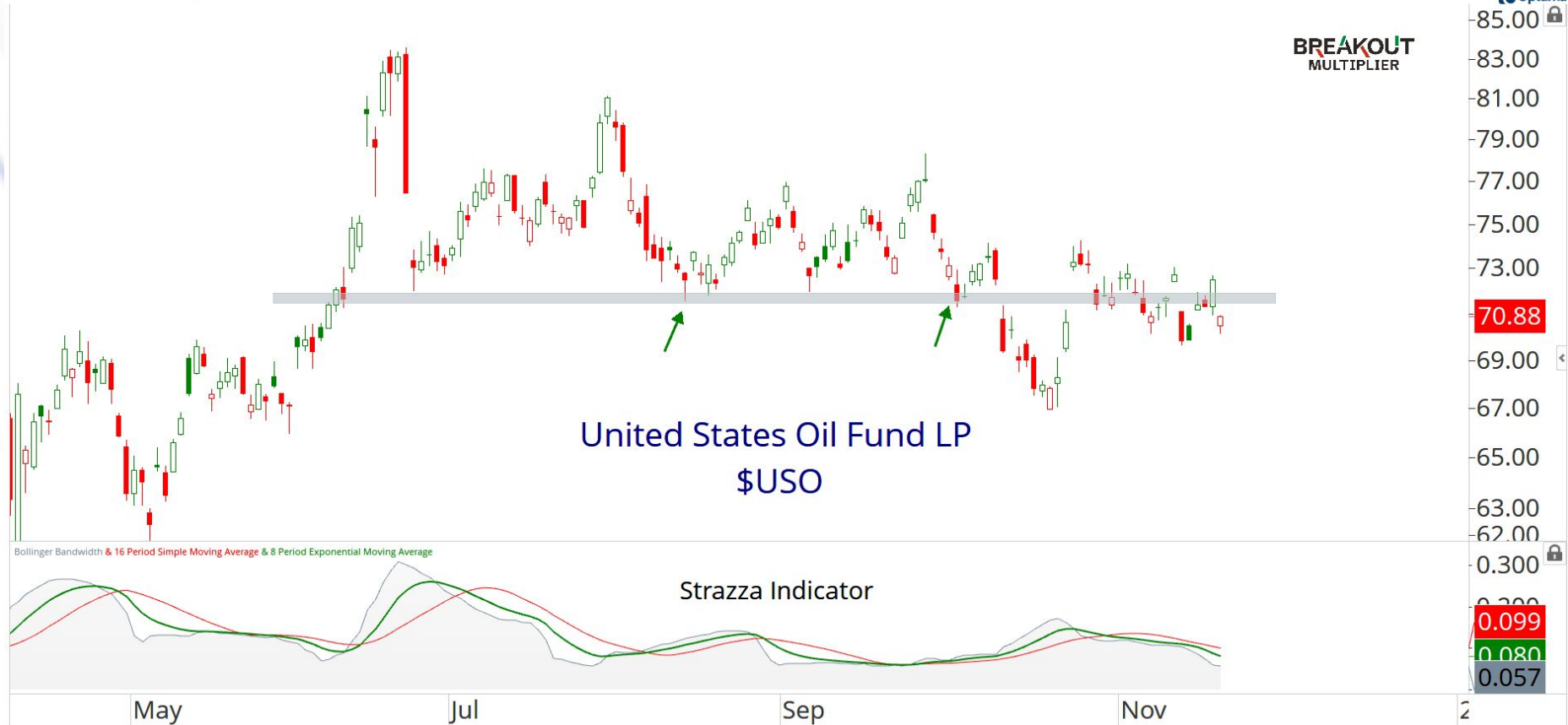
Bollinger Bandwidth & 16 Period Simple Moving Average & 8 Period Exponential Moving Average



Strazza Indicator

\$USO 1/16 \$80 calls for approximately \$1.40 per contract

United States Oil Fund ETF - USO:US - Daily - USD



\$XOM 11/21 \$120 calls for approximately \$1.53 per contract

Exxon Mobil Corp. - XOM:US - Daily - USD

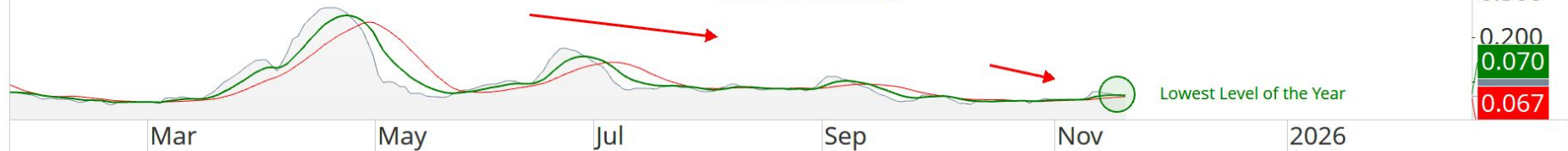
BREAKOUT
MULTIPLIER

Exxon Mobile \$XOM



Bollinger Bandwidth & 16 Period Simple Moving Average & 8 Period Exponential Moving Average

Strazza Indicator



20th Nov 2025

\$XOM 12/19 \$120 calls for approximately \$2.12 per contract

Exxon Mobil Corp. - XOM:US - Daily - USD

BREAKOUT
MULTIPLIER

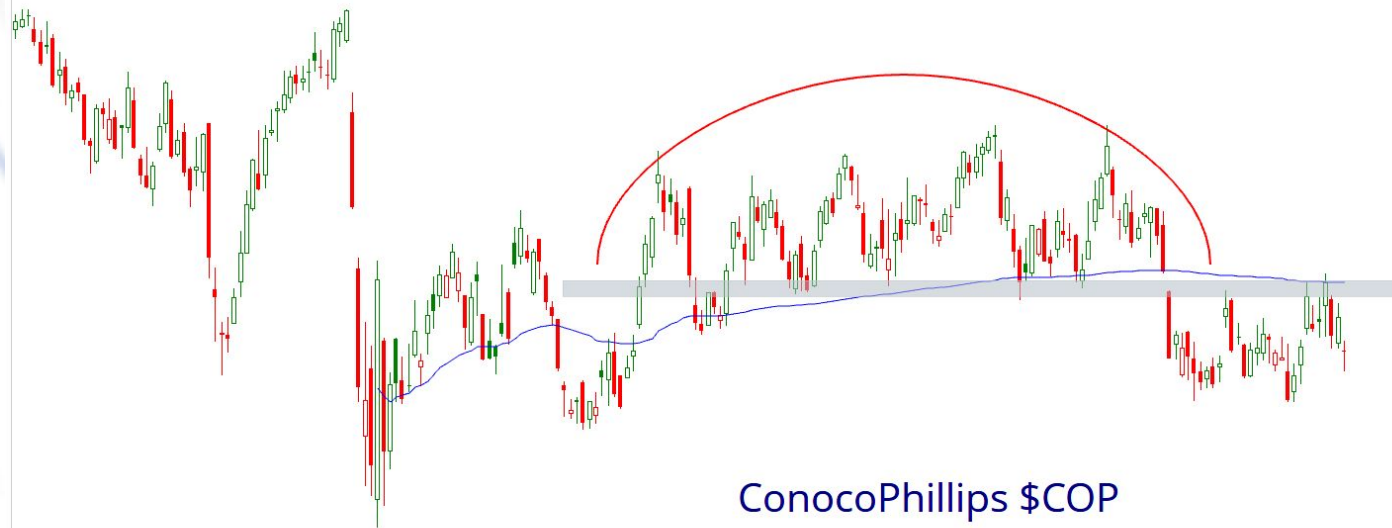
Exxon Mobile \$XOM



\$XOM 1/16 \$125 calls for approximately \$1.75 per contract

\$COP 11/21 \$100 calls for approximately \$2.30 per contract

Conoco Phillips - COP:US - Daily - USD



BREAKOUT
MULTIPLIER

Optima

108.00

106.00

104.00

102.00

100.00

98.00

96.00

94.00

92.00

90.00

88.00

86.00

84.00

82.00

80.00

78.00

76.00

74.00

72.00

70.00

68.00

66.00

64.00

62.00

60.00

58.00

56.00

54.00

52.00

50.00

48.00

46.00

44.00

42.00

40.00

38.00

36.00

34.00

32.00

30.00

28.00

26.00

24.00

22.00

20.00

18.00

16.00

14.00

12.00

10.00

8.00

6.00

4.00

2.00

0.00

-2.00

-4.00

-6.00

-8.00

-10.00

-12.00

-14.00

-16.00

-18.00

-20.00

-22.00

-24.00

-26.00

-28.00

-30.00

-32.00

-34.00

-36.00

-38.00

-40.00

-42.00

-44.00

-46.00

-48.00

-50.00

-52.00

-54.00

-56.00

-58.00

-60.00

-62.00

-64.00

-66.00

-68.00

-70.00

-72.00

-74.00

-76.00

-78.00

-80.00

-82.00

-84.00

-86.00

-88.00

-90.00

-92.00

-94.00

-96.00

-98.00

-100.00

-102.00

-104.00

-106.00

-108.00

-110.00

-112.00

-114.00

-116.00

-118.00

-120.00

-122.00

-124.00

-126.00

-128.00

-130.00

-132.00

-134.00

-136.00

-138.00

-140.00

-142.00

-144.00

-146.00

-148.00

-150.00

-152.00

-154.00

-156.00

-158.00

-160.00

-162.00

-164.00

-166.00

-168.00

-170.00

-172.00

-174.00

-176.00

-178.00

-180.00

-182.00

-184.00

-186.00

-188.00

-190.00

-192.00

-194.00

-196.00

-198.00

-200.00

-202.00

-204.00

-206.00

-208.00

-210.00

-212.00

-214.00

-216.00

-218.00

-220.00

-222.00

-224.00

-226.00

-228.00

-230.00

-232.00

-234.00

-236.00

-238.00

-240.00

-242.00

-244.00

-246.00

-248.00

-250.00

-252.00

-254.00

-256.00

-258.00

-260.00

-262.00

-264.00

-266.00

-268.00

-270.00

-272.00

-274.00

-276.00

-278.00

-280.00

-282.00

-284.00

-286.00

-288.00

-290.00

-292.00

-294.00

-296.00

-298.00

-300.00

-302.00

-304.00

-306.00

-308.00

-310.00

-312.00

-314.00

-316.00

-318.00

-320.00

-322.00

-324.00

-326.00

-328.00

-330.00

-332.00

-334.00

-336.00

-338.00

-340.00

-342.00

-344.00

-346.00

-348.00

-350.00

-352.00

-354.00

-356.00

-358.00

-360.00

-362.00

-364.00

-366.00

-368.00

-370.00

-372.00

-374.00

-376.00

-378.00

-380.00

-382.00

-384.00

-386.00

-388.00

-390.00

-392.00

-394.00

-396.00

-398.00

-400.00

-402.00

-404.00

-406.00

-408.00

-410.00

-412.00

-414.00

-416.00

-418.00

-420.00

-422.00

-424.00

-426.00

-428.00

-430.00

-432.00

-434.00

-436.00

-438.00

-440.00

-442.00

-444.00

-446.00

-448.00

-450.00

-452.00

-454.00

-456.00

-458.00

-460.00

-462.00

-464.00

-466.00

-468.00

-470.00

-472.00

-474.00

-476.00

-478.00

-480.00

-482.00

-484.00

-486.00

-488.

\$SLB 12/19 \$40 calls for approximately \$0.70 per contract

Schlumberger Ltd - SLB:US - Daily - USD

SLB Ltd \$SLB

BREAKOUT
MULTIPLIER

Optuma

52.00
51.00
49.00
47.00
45.00
43.00
41.00
39.00
37.00
35.86
35.00
33.00
32.00
31.00
30.00
29.00

Bollinger Bandwidth & 80 Period Simple Moving Average & 40 Period Exponential Moving Average

Weekly Strazza Indicator

0.500
0.173
0.158
0.155

Jul

Oct

2025

Apr

Jul

Oct

2026

Apr

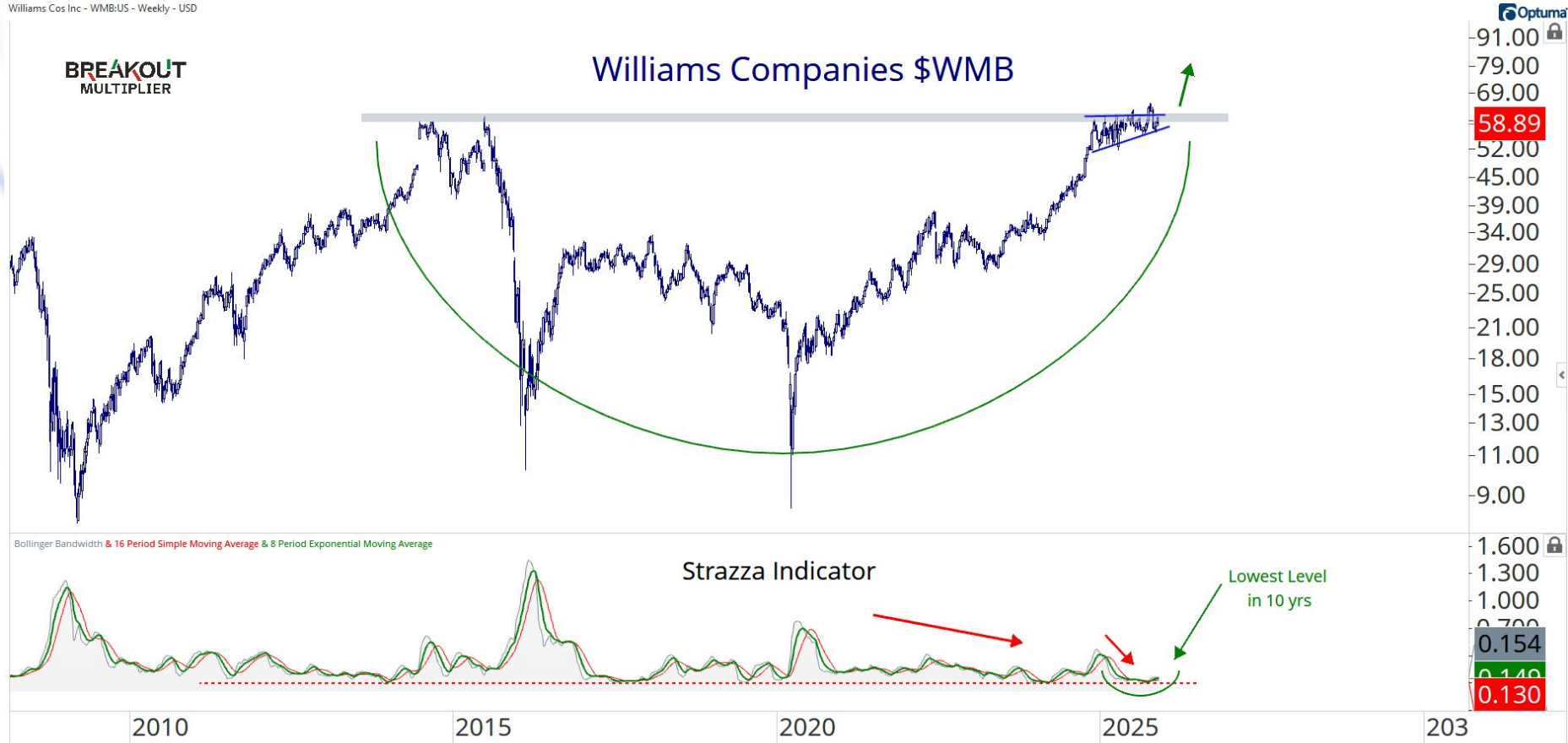
20th Nov 2025

\$WMB 1/16 \$65 calls for approximately \$0.95 per contract

Williams Cos Inc - WMB:US - Weekly - USD

BREAKOUT
MULTIPLIER

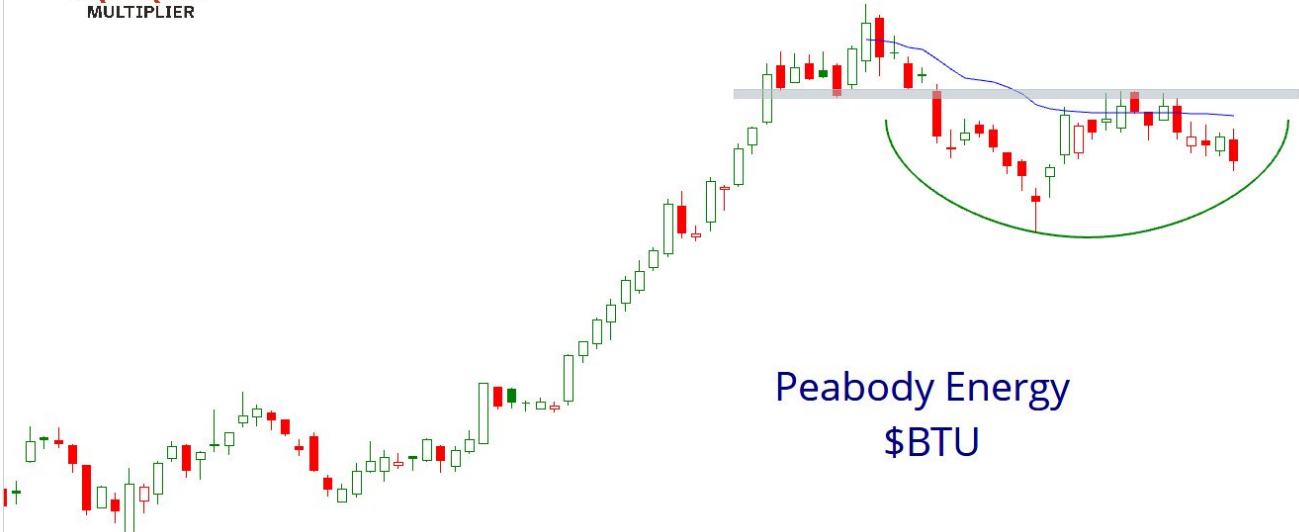
Williams Companies \$WMB



\$BTU 12/19 \$35 calls for approximately \$1.68 per contract

Peabody Energy Corp. - Ordinary Shares New - BTU:US - Daily - USD

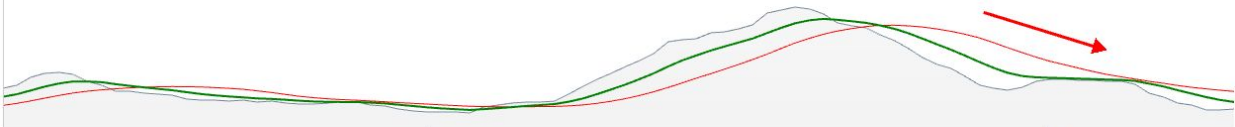
BREAKOUT
MULTIPLIER



Peabody Energy
\$BTU

Bollinger Bandwidth & 16 Period Simple Moving Average & 8 Period Exponential Moving Average

Squeeze Indicator



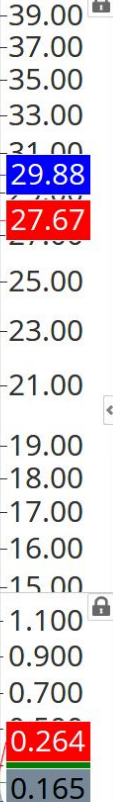
Sep

Nov

2026

20th Nov 2025

Optima



\$BABA 1/16 \$185 calls for approximately \$4.60 per contract

Alibaba Group Holding Ltd - BABA:US - Daily - USD

BREAKOUT
MULTIPLIER

Alibaba
\$BABA



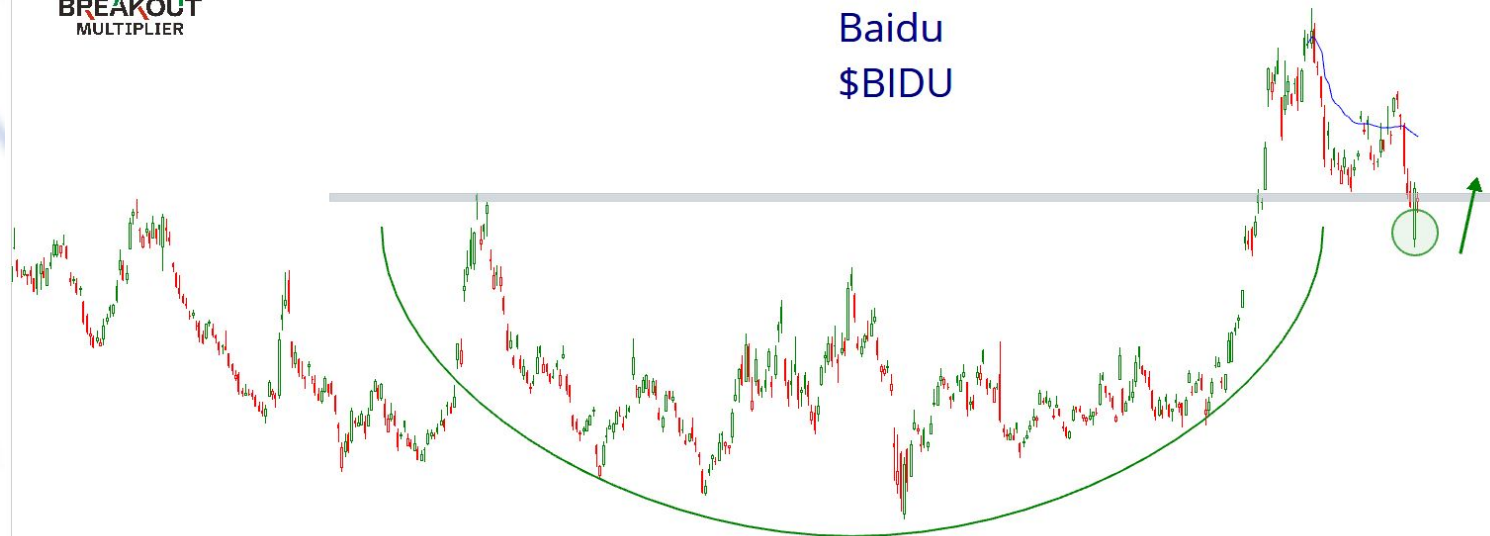
20th Nov 2025

\$BIDU 1/16 \$135 calls for approximately \$3.10 per contract

Baidu Inc - BIDU:US - Daily - USD

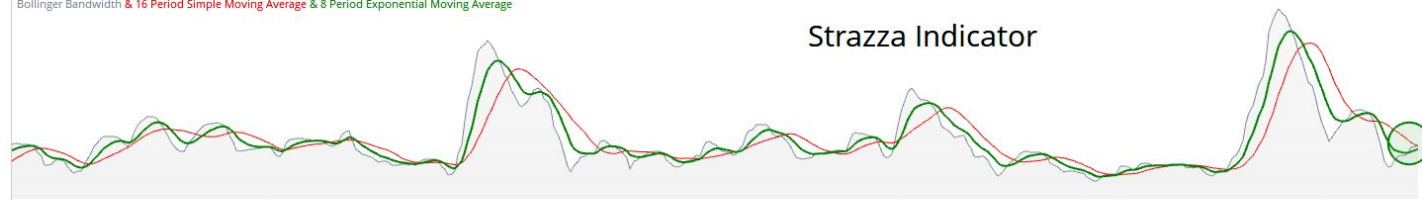
BREAKOUT
MULTIPLIER

Baidu
\$BIDU



Bollinger Bandwidth & 16 Period Simple Moving Average & 8 Period Exponential Moving Average

Strazza Indicator



Apr

Jul

Oct

2025

Apr

Jul

Oct

2026

20th Nov 2025

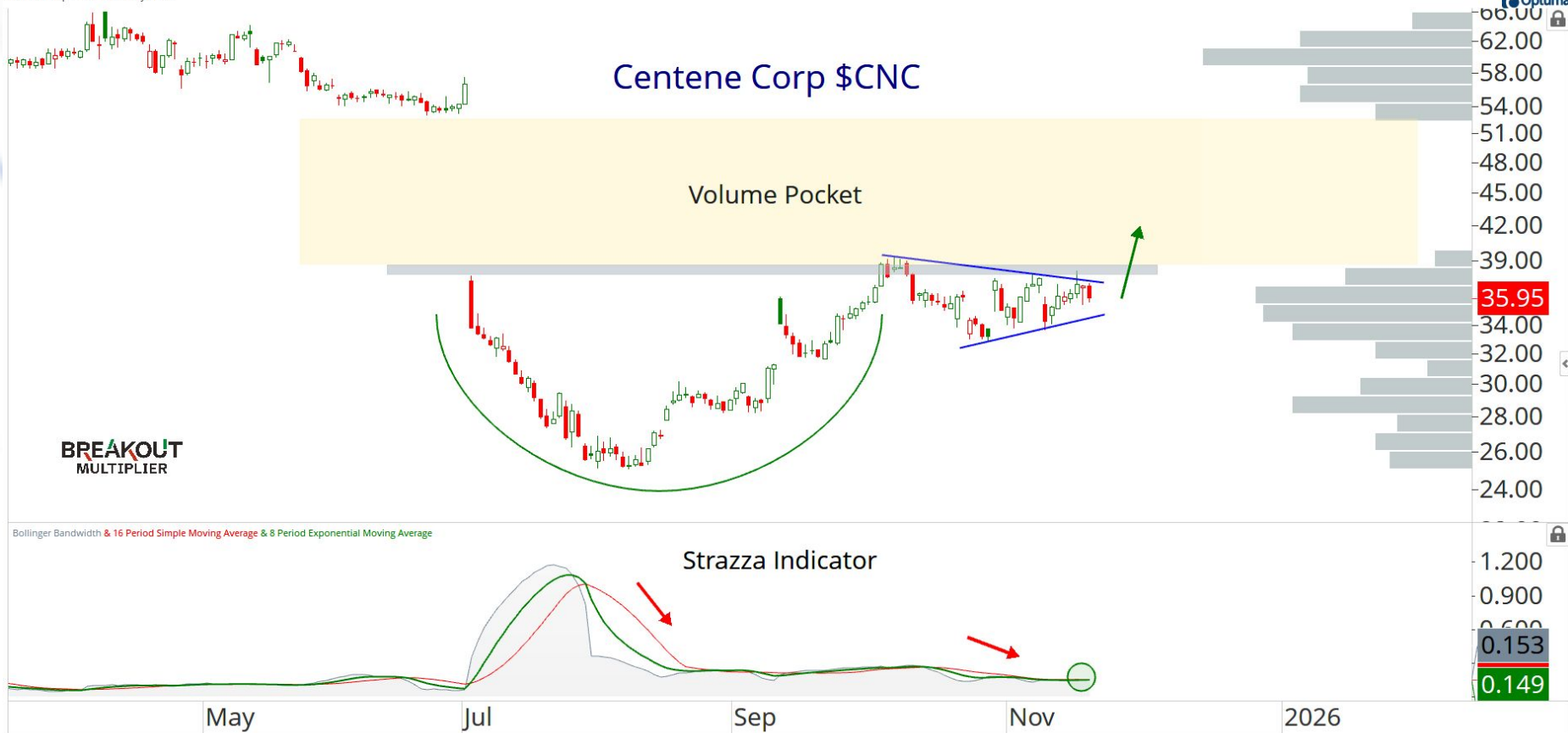
Optima

158.00
151.00
144.00
138.00
132.00
125.63
120.00
115.49
110.00
105.00
100.00
95.00
91.00
87.00
83.00
79.00
75.00
71.00

0.500
0.400
0.172
0.165
0.158

\$CNC 12/19 \$42.50 calls for approximately \$0.79 per contract

Centene Corp. - CNC:US - Daily - USD

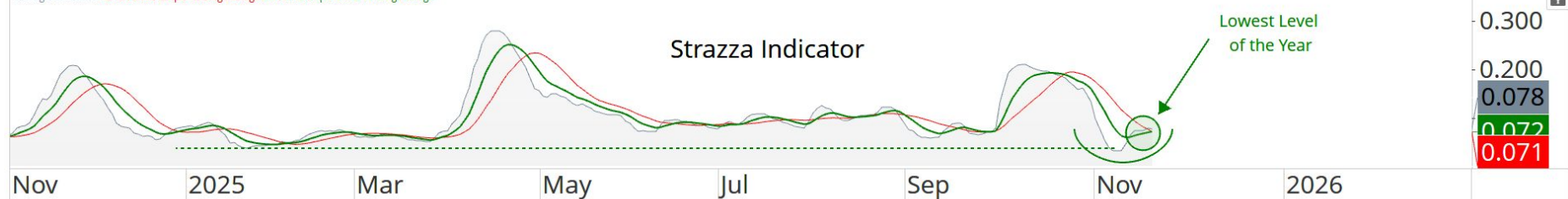


\$PFE 1/16 \$27.50 calls for approximately \$0.51 per contract

Pfizer Inc. - PFE:US - Daily - USD



Bollinger Bandwidth & 16 Period Simple Moving Average & 8 Period Exponential Moving Average



20th Nov 2025

\$C 12/19 \$110 calls for approximately \$1.63 per contract

Citigroup Inc - C:US - Daily - USD

BREAKOUT
MULTIPLIER

Citigroup \$C



20th Nov 2025

\$C 11/21 \$105 calls for approximately \$2.10 per contract (1/2 Open)

Citigroup Inc - C:US - Daily - USD

BREAKOUT
MULTIPLIER

Citigroup \$C



\$C 11/21 \$105 calls for approximately \$1.12 per contract

\$SCHW 1/16 \$15 calls for approximately \$2.43 per contract

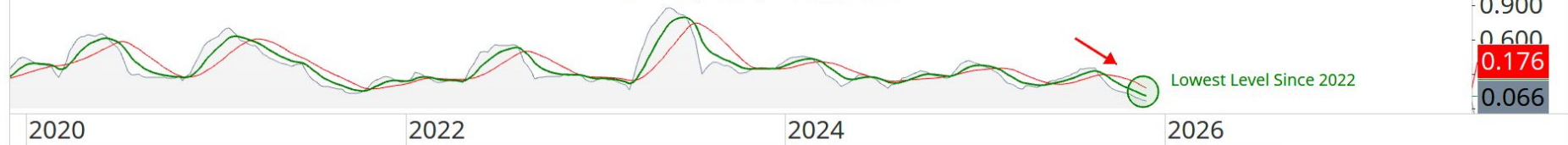
Charles Schwab Corp. - SCHW:US - Weekly - USD

Charles Schwab \$SCHW



Bollinger Bandwidth & 16 Period Simple Moving Average & 8 Period Exponential Moving Average

Weekly Strazza Indicator



20th Nov 2025

\$GRAB 1/16 \$7.50 calls for approximately \$0.18 per contract

Grab Holdings Limited - Ordinary Shares - Class A - GRAB:US - Daily - USD

BREAKOUT
MULTIPLIER

Grab Holdings
\$GRAB



20th Nov 2025

\$UAL 12/19 \$110 calls for approximately \$2.90 per contract

United Airlines Holdings Inc - UAL:US - Daily - USD

BREAKOUT
MULTIPLIER

United Airlines \$UAL



20th Nov 2025

\$RKT 11/21 \$15 puts for approximately \$0.33 per contract

Rocket Companies Inc - Ordinary Shares Class A - RKT:US - Daily - USD



\$FCX 11/21 \$50 calls for approximately \$1.25 per contract

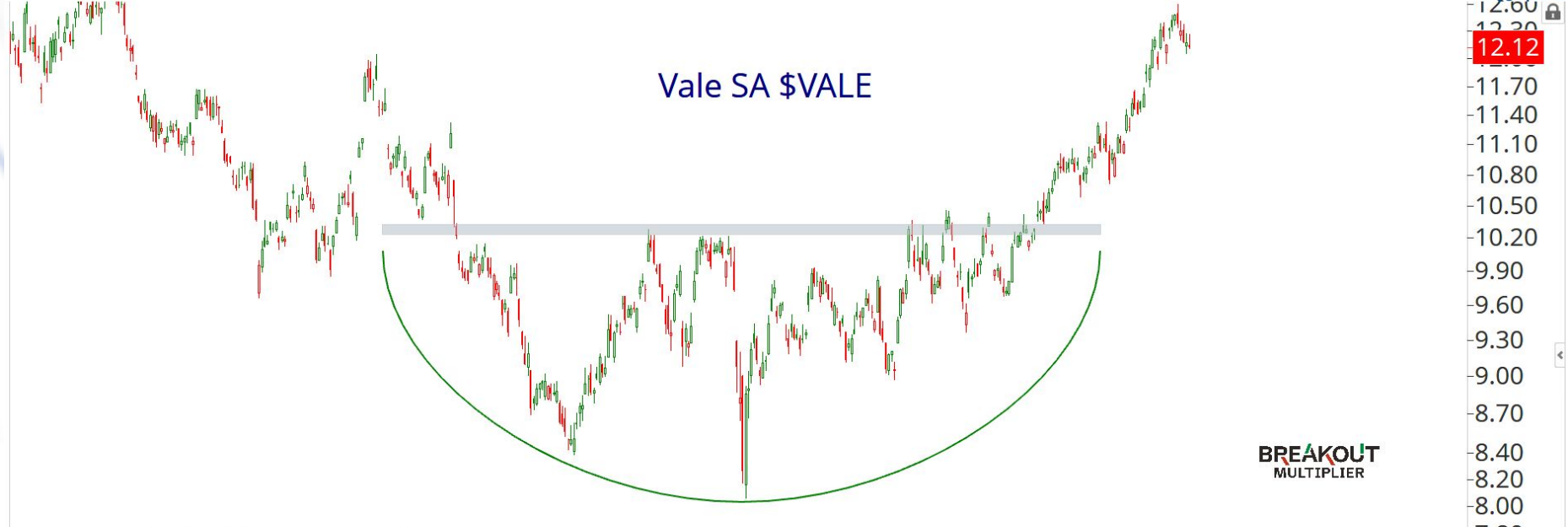
Freeport-McMoRan Inc - FCX:US - Daily - USD



20th Nov 2025

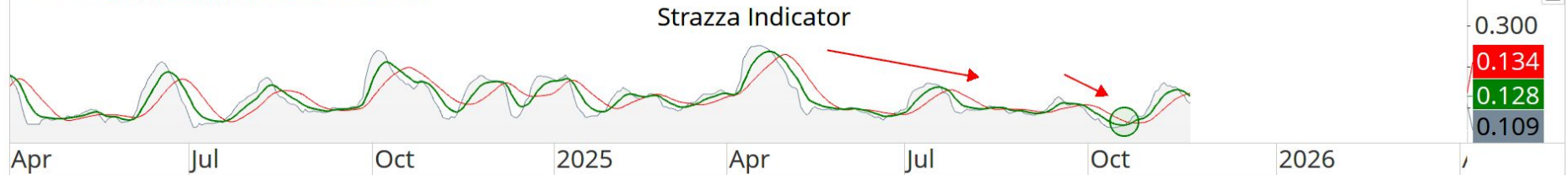
\$VALE 12/19 \$12 calls for approximately \$0.16 per contract (1/2 Open)

Vale SA - VALE:US - Daily - USD



BREAKOUT
MULTIPLIER

Bollinger Bandwidth & 16 Period Simple Moving Average & 8 Period Exponential Moving Average



\$MSFT 11/21 \$545 calls for approximately \$6.80 per contract (1/2 Open)

Microsoft Corporation - MSFT:US - Daily - USD

BREAKOUT
MULTIPLIER

Microsoft Corp \$MSFT



Optima

597.00

590.00

580.00

570.00

560.00

550.00

540.00

530.00

520.00

515.14

510.00

500.00

490.00

487.12

480.00

470.00

0.115

0.099

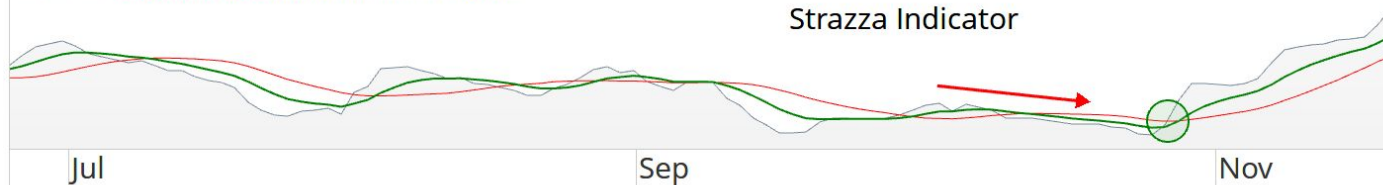
0.086

0.050

0.030

Bollinger Bandwidth & 16 Period Simple Moving Average & 8 Period Exponential Moving Average

Strazza Indicator

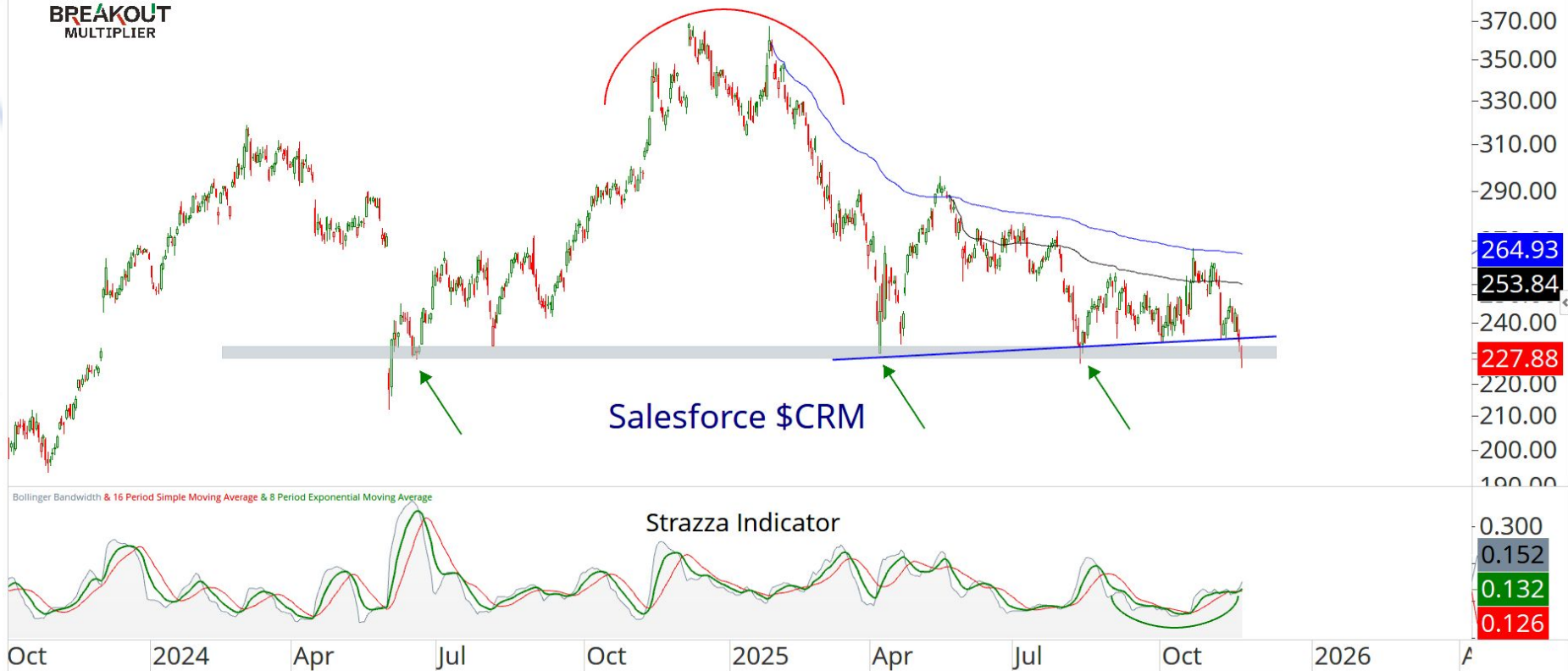


20th Nov 2025

\$CRM 12/19 \$290 calls for approximately \$5.40 per contract

Salesforce Inc - CRM:US - Daily - USD

**BREAKOUT
MULTIPLIER**



20th Nov 2025

\$EH 1/16/26 \$20 calls for approximately \$1.13 per contract

EHang Holdings Ltd - ADR - EH:US - Weekly - USD

**BREAKOUT
MULTIPLIER**

**EHang Holdings
\$EH**



Optima

140.00

100.00

70.00

50.00

30.00

18.75

15.95

14.36

6.00

4.00

0.00

5.000

4.000

3.000

2.000

0.314

0.274

Bollinger Bandwidth & 16 Period Simple Moving Average & 8 Period Exponential Moving Average

Weekly Strazza Indicator

**Lowest Level
Ever**

12 / 26 Percentage Price Oscillator

Weekly PPO

40.00

-0.94

-1.73

-2.67

2020

2022

2024

2026

20th Nov 2025

\$EH 1/16/26 \$20 calls for approximately \$1.13 per contract

EHang Holdings Ltd - ADR - EH:US - Daily - USD

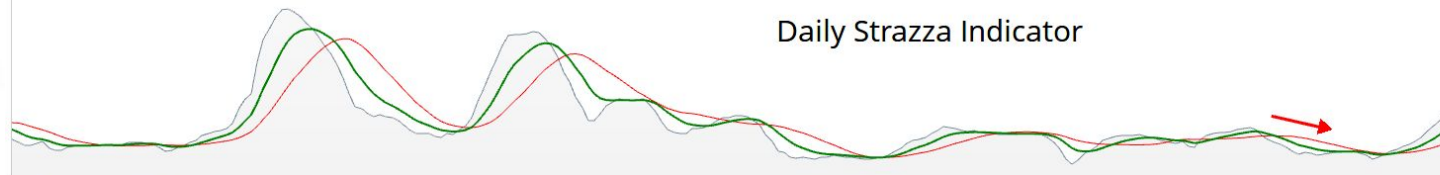
**BREAKOUT
MULTIPLIER**

**EHang Holdings
\$EH**



Bollinger Bandwidth & 16 Period Simple Moving Average & 8 Period Exponential Moving Average

Daily Strazza Indicator



12 / 26 Percentage Price Oscillator

Daily PPO



2025

Mar

May

Jul

Sep

Nov

2026

20th Nov 2025

Optima

31.00

28.00

26.00

24.00

22.00

20.00

18.82

18.00

16.00

14.36

13.00

0.900

0.700

0.500

0.315

0.241

0.179

10.00

1.00

-1.71

-3.28

-5.00

\$CPNG 12/19 \$35 calls for approximately \$0.64 per contract

Coupage Inc - Ordinary Shares - Class A - CPNG:US - Daily - USD

**BREAKOUT
MULTIPLIER**

**Coupage Inc
\$CPNG**



\$CPNG 1/16/26 \$36 calls for approximately \$0.66 per contract

\$MRNA 11/21 \$35 calls for approximately \$1.37 per contract

Moderna Inc - MRNA:US - Daily - USD

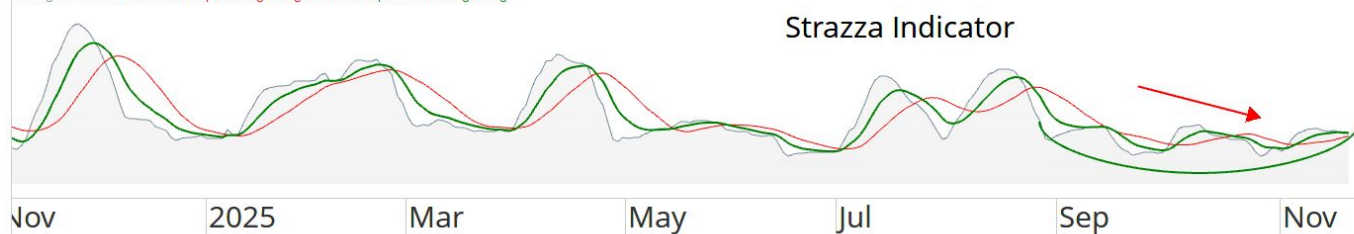


BREAKOUT
MULTIPLIER

Optima

46.00
43.00
41.00
39.00
37.00
35.00
33.00
31.00
29.00
27.00
26.28
25.00
24.18
23.00
21.00
20.00

Bollinger Bandwidth & 16 Period Simple Moving Average & 8 Period Exponential Moving Average

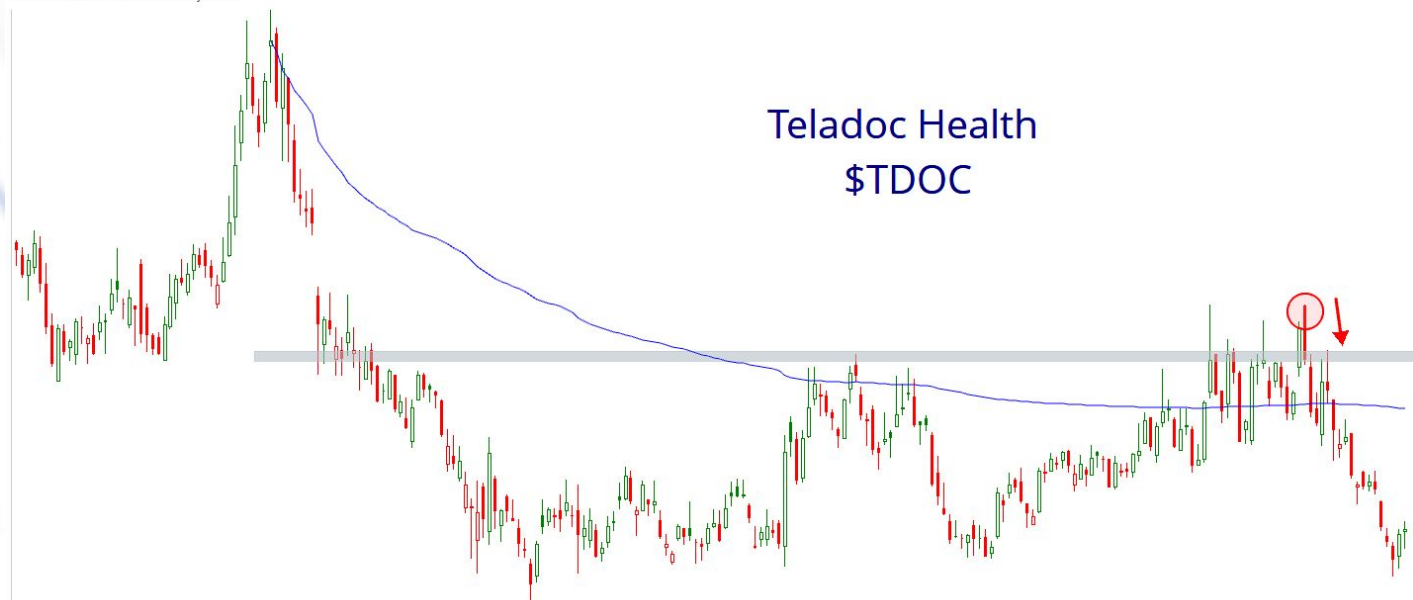


0.600
0.199
0.196
0.186

Nov 2025 Mar May Jul Sep Nov 2026

\$TDOC 11/21 \$12 calls for approximately \$0.37 per contract

Teladoc Health Inc - TDOC:US - Daily - USD



Teladoc Health
\$TDOC

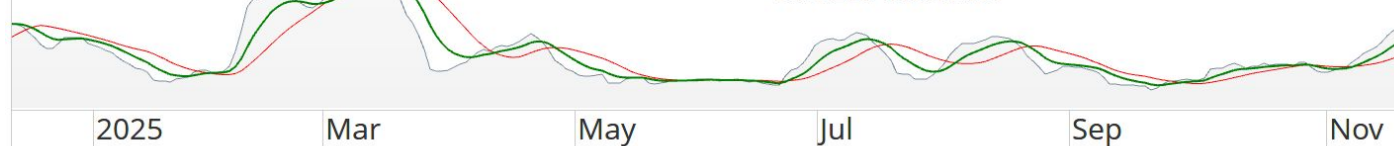
BREAKOUT
MULTIPLIER

Optima

14.40
13.70
13.00
12.40
11.80
11.20
10.70
10.20
9.70
9.20
8.70
8.40
7.90
7.50
7.05
6.70
6.40
6.10

Bollinger Bandwidth & 16 Period Simple Moving Average & 8 Period Exponential Moving Average

Strazza Indicator



0.600
0.386
0.326
0.254
0.000

20th Nov 2025

\$HIMS 11/21 \$75 calls for approximately \$3.05 per contract (1/2 Open)

Hims & Hers Health Inc - HIMS:US - Daily - USD

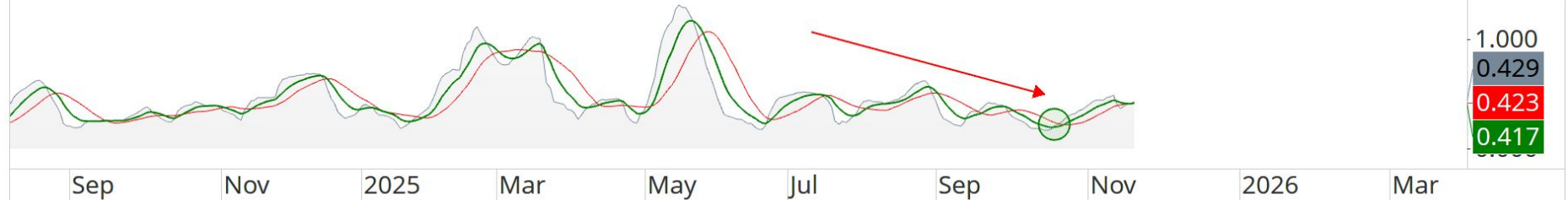
BREAKOUT
MULTIPLIER

Hims & Hers Health \$HIMS



Bollinger Bandwidth & 16 Period Simple Moving Average & 8 Period Exponential Moving Average

Strazza Indicator



20th Nov 2025

\$MARA 11/21 \$28 calls for approximately \$0.86 per contract (1½ Open)

MARA Holdings Inc. - MARA:US - Daily - USD

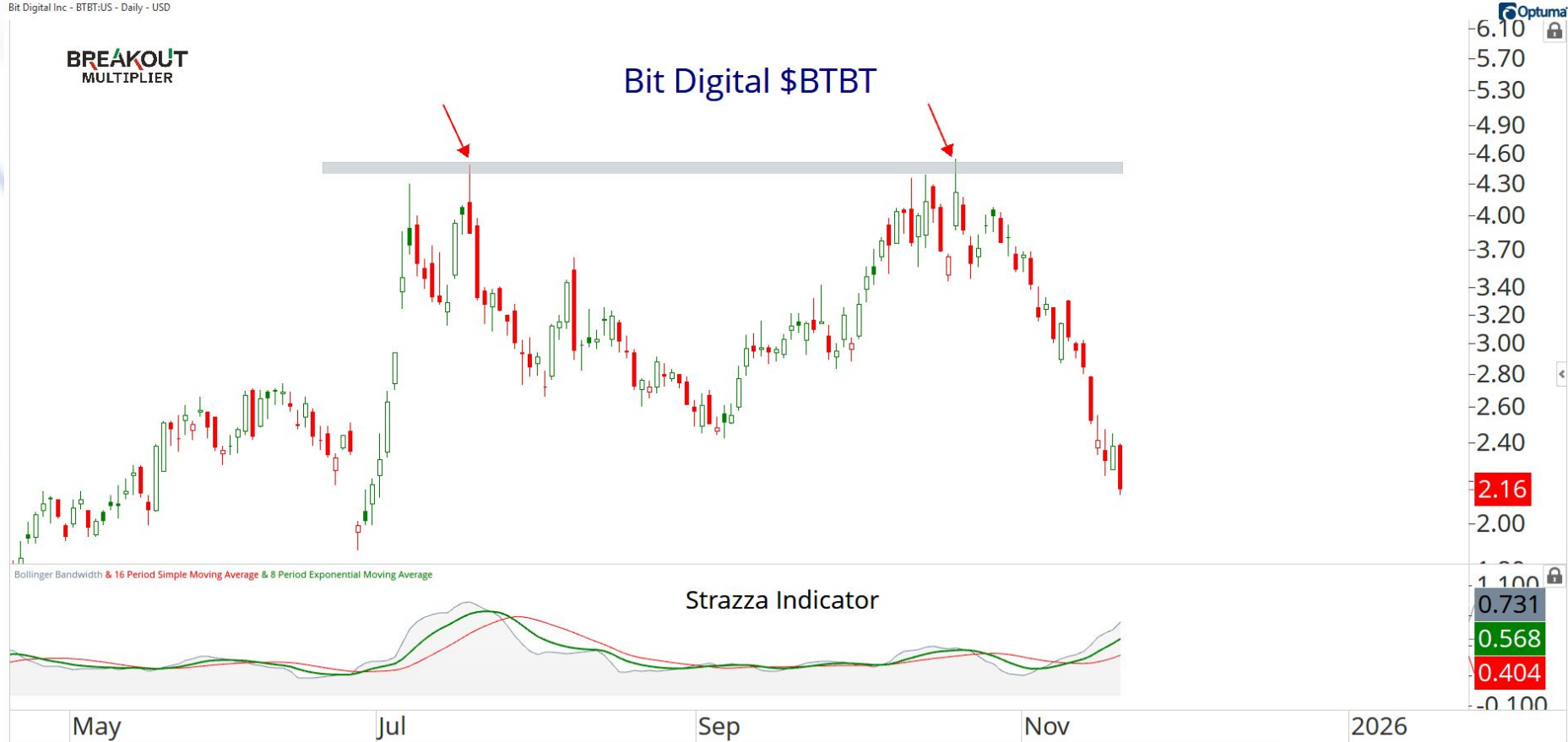


\$BTBT 11/21 \$5.50 calls for approximately \$0.30 per contract

Bit Digital Inc - BTBT:US - Daily - USD

BREAKOUT
MULTIPLIER

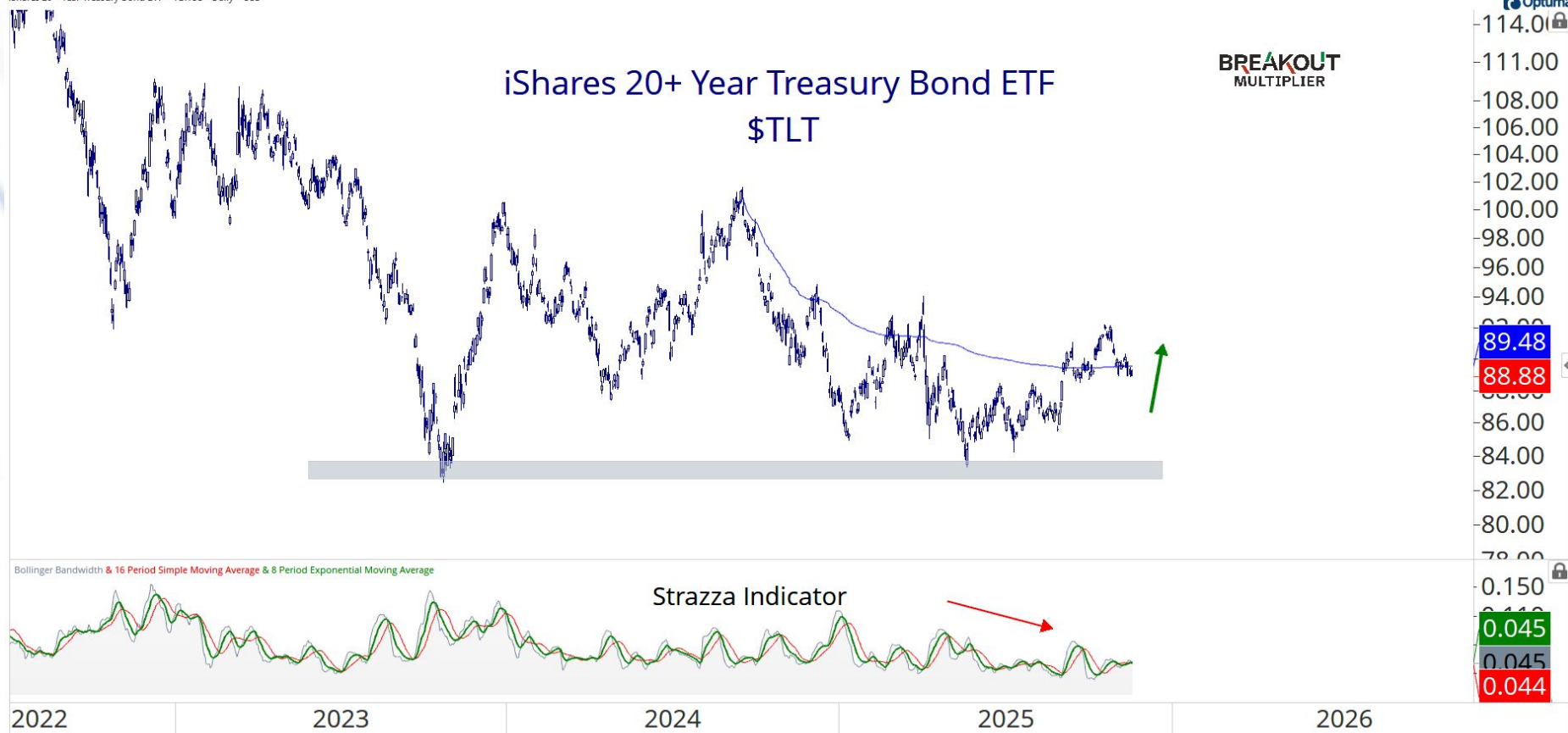
Bit Digital \$BTBT



20th Nov 2025

\$TLT 11/21 \$92 calls for approximately \$0.64 per contract (1/2 Open)

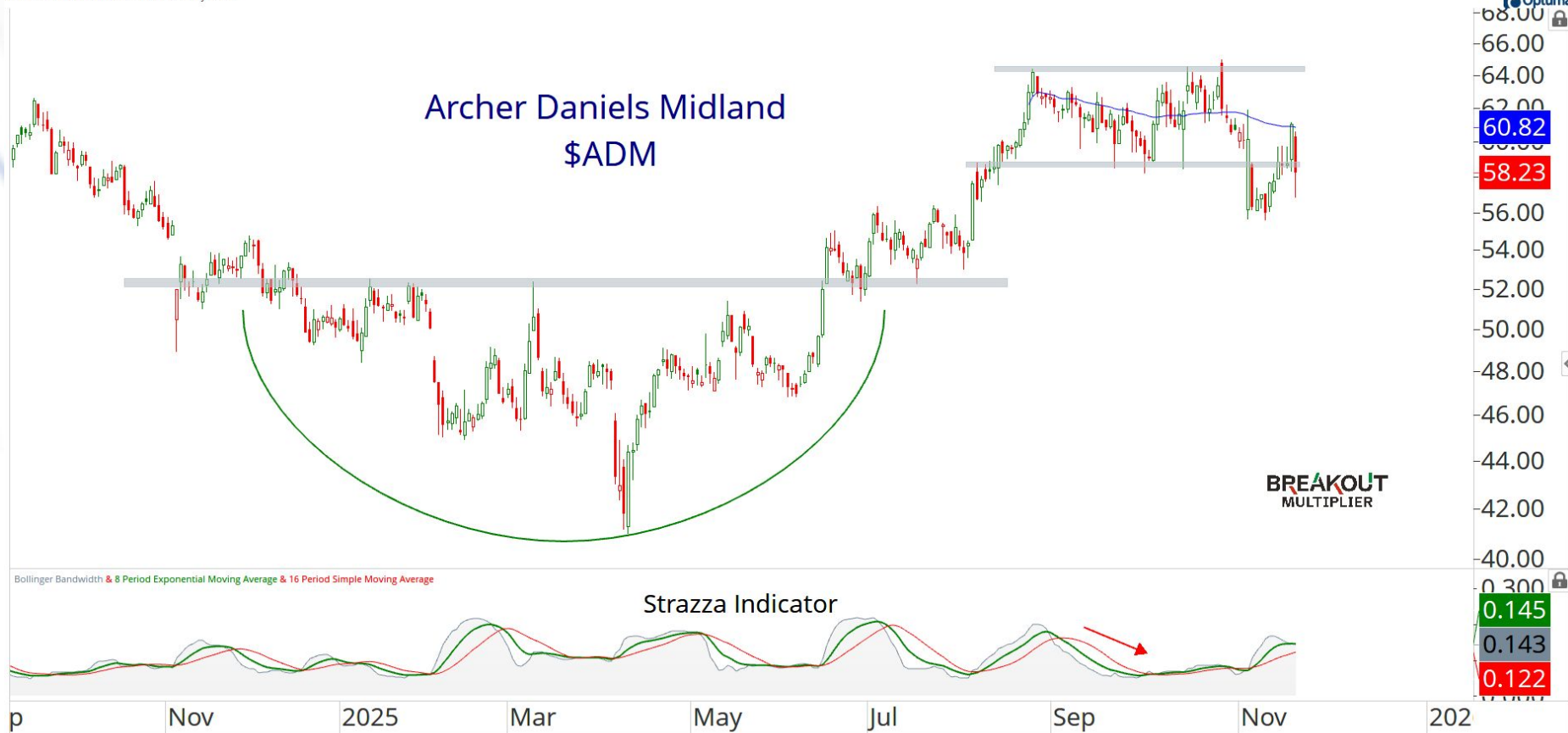
iShares 20+ Year Treasury Bond ETF - TLT:US - Daily - USD



\$TLT 12/19 \$93 calls for approximately \$1.04 per contract

\$ADM 12/19 \$65 calls for approximately \$1.46 per contract (1/2 Open)

Archer Daniels Midland Co. - ADM:US - Daily - USD



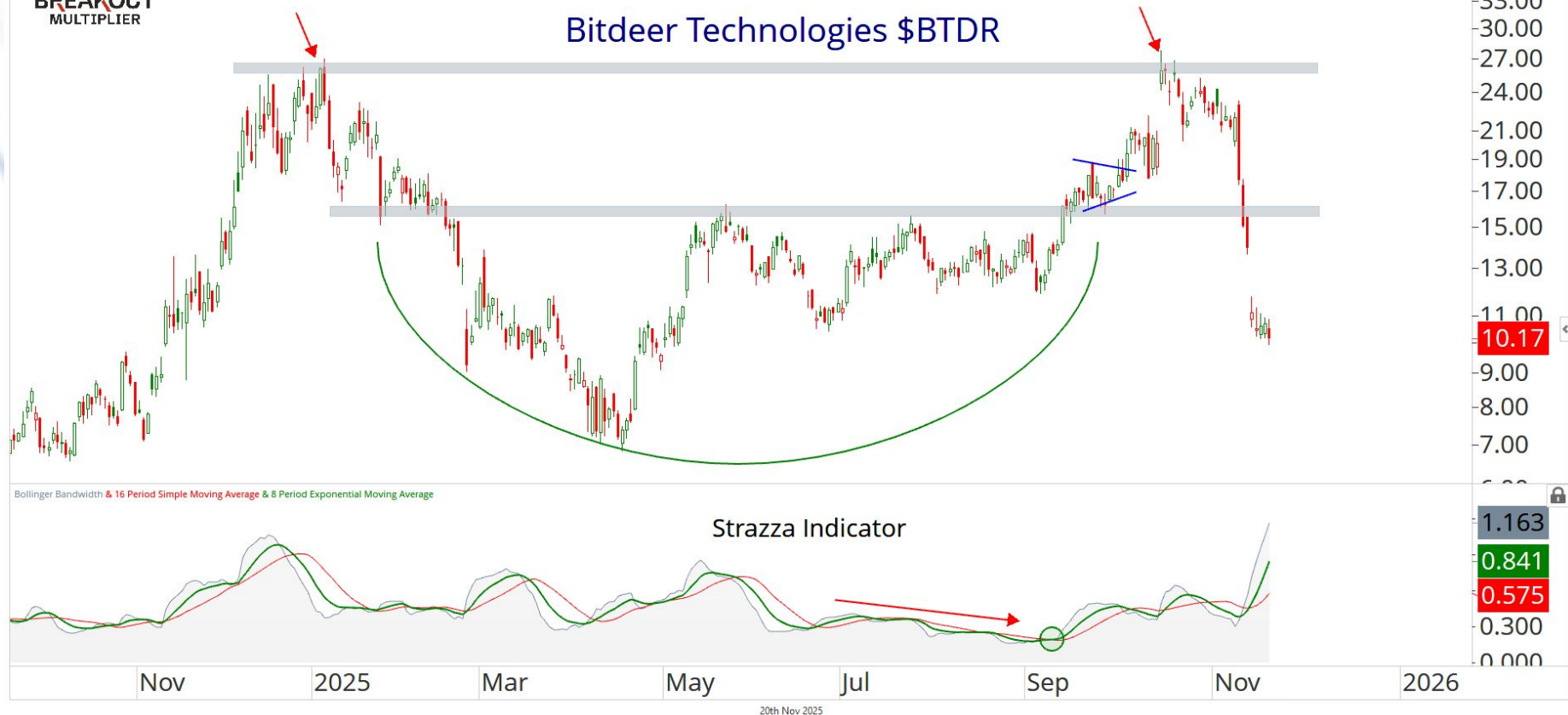
20th Nov 2025

\$BTDR 12/19 \$20 calls for approximately \$1.45 per contract (1/2 Open)

Bitdeer Technologies Holding Co - BTDR:US - Daily - USD

BREAKOUT
MULTIPLIER

Bitdeer Technologies \$BTDR

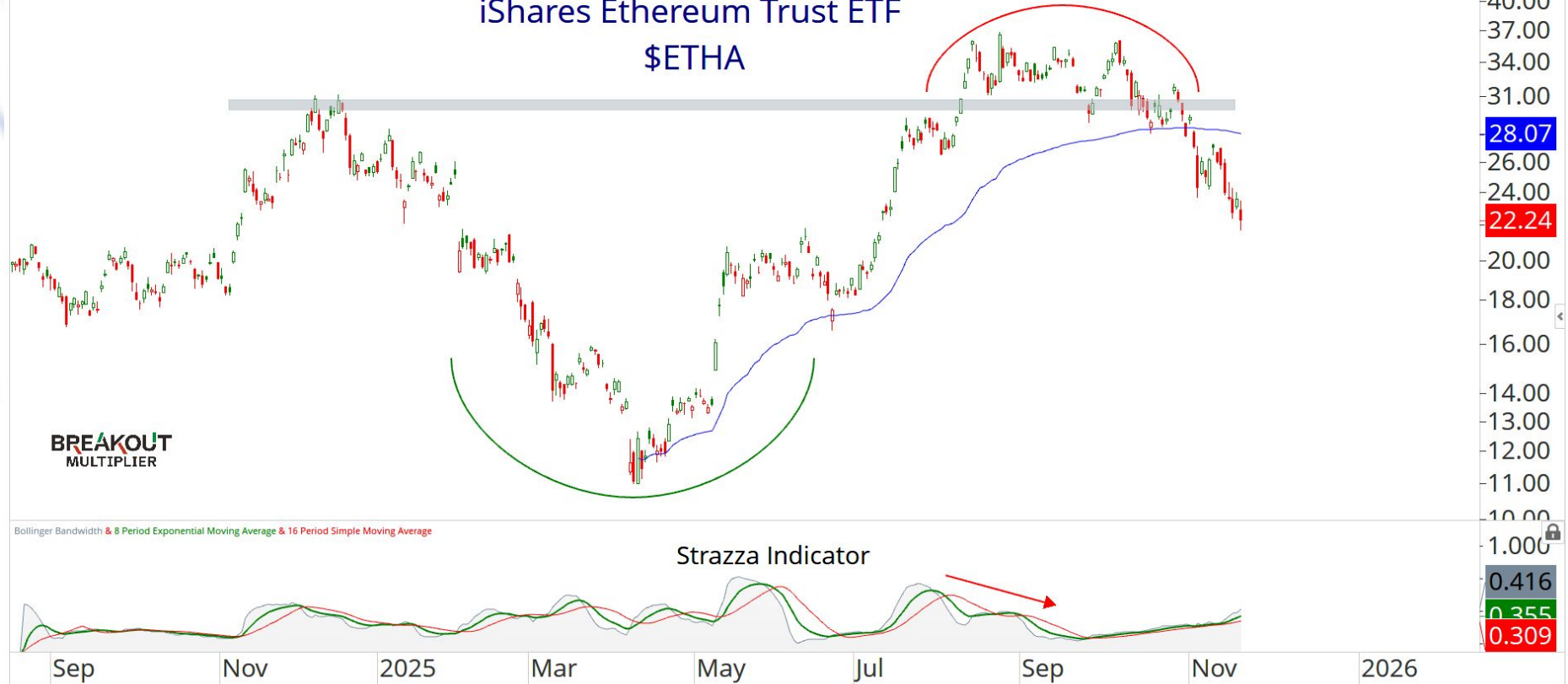


\$BTDR 11/21 \$25 calls for approximately \$1.75 per contract (1/2 Open)

\$ETHA 11/21 \$40 calls for approximately \$2.09 per contract

iShares Ethereum Trust ETF - ETHA:US - Daily - USD

iShares Ethereum Trust ETF \$ETHA



20th Nov 2025

\$XPEV 11/21 \$25 calls for approximately \$1.22 per contract (1/2 Open)

XPeng Inc - ADR - XPEV:US - Weekly - USD



\$XPEV 12/19 \$28 calls for approximately \$1.08 per contract (1/2 Open)

\$JD 12/19 \$42.50 calls for approximately \$1.75 per contract

JD.com - JD:US - Daily - USD

JD.com \$JD

BREAKOUT
MULTIPLIER



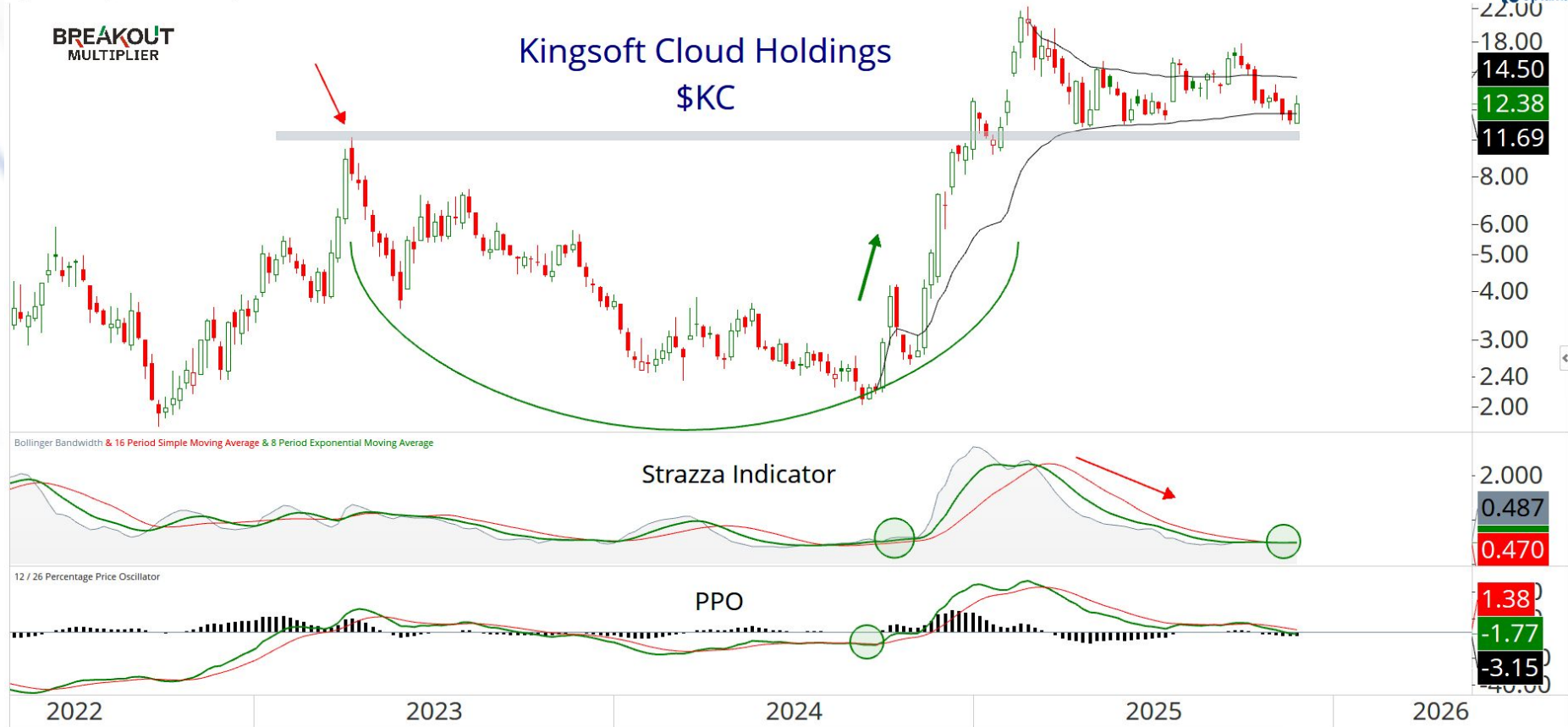
20th Nov 2025

\$KC 11/21 \$20 calls for approximately \$1.10 per contract

Kingsoft Cloud Holdings Ltd - ADR - KC:US - Weekly - USD

BREAKOUT
MULTIPLIER

Kingsoft Cloud Holdings
\$KC



20th Nov 2025

\$RCAT 11/21 \$15 calls for approximately \$0.86 per contract (1/2 Open)

Red Cat Holdings Inc - RCAT:US - Daily - USD

BREAKOUT
MULTIPLIER

Red Cat Holdings \$RCAT

Oops!



Strazza Indicator

Bollinger Bandwidth & 16 Period Simple Moving Average & 8 Period Exponential Moving Average

Optuma

19.000

17.000

15.000

13.000

12.000

11.000

10.000

9.000

8.000

7.000

6.610

6.000

5.500

5.000

4.400

4.000

1.500

0.696

0.601

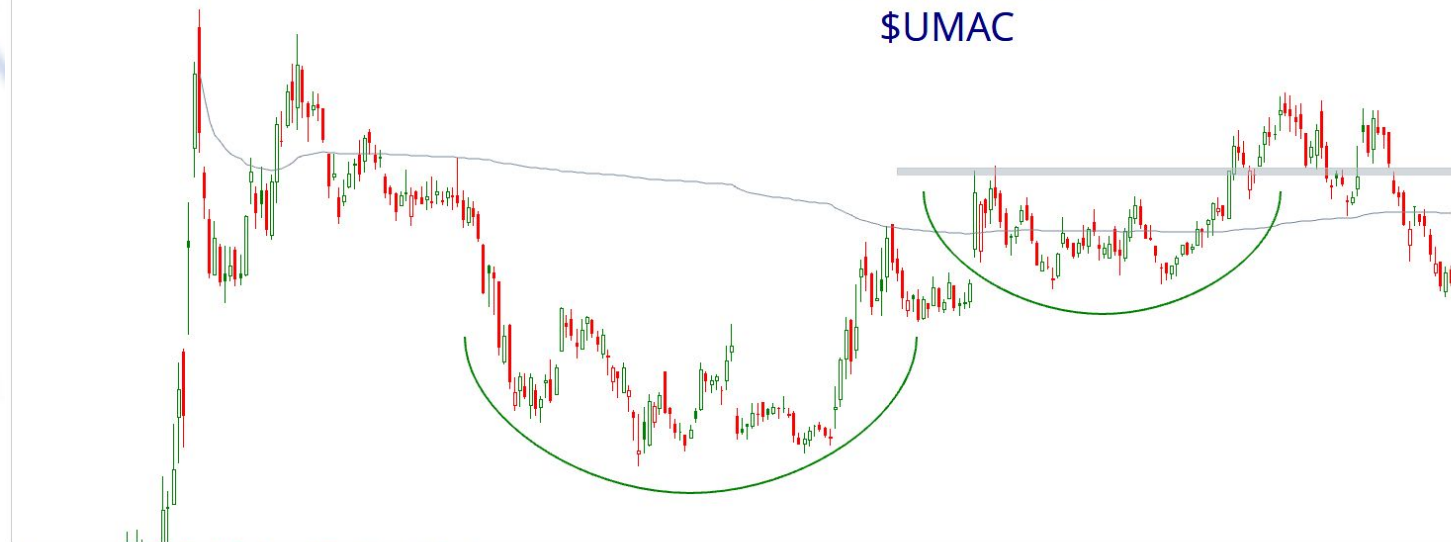
0.593

20th Nov 2025

\$UMAC 11/21 \$20 calls for approximately \$1.40 per contract

Unusual Machines Inc - UMAC:US - Daily - USD

Unusual Machines \$UMAC



Optima

34.000

30.000

26.000

23.000

20.000

17.000

15.000

13.000

11.233

8.690

8.000

7.000

6.000

5.000

4.000

3.000

0.776

0.514

BREAKOUT
MULTIPLIER

Bollinger Bandwidth & 16 Period Simple Moving Average & 8 Period Exponential Moving Average

Strazza Indicator



20th Nov 2025

\$QUBT 11/21 \$30 calls for approximately \$1.62 per contract (1/2 Open)

Quantum Computing Inc - QUBT:US - Weekly - USD

**BREAKOUT
MULTIPLIER**

Quantum Computing \$QUBT



20th Nov 2025



Questions?

info@stockmarketmedia.com